



YEAR IN REVIEW | FISCAL YEAR 2023 | JULY 2022 - JUNE 2023





# TABLE OF CONTENTS

<b>5</b>	CEO Letter
<b>7</b>	Station at a Glance
<b>8</b>	PBS Hawai'i Leadership Board of Directors PBS Hawai'i Statewide Community Advisory Board PBS Hawai'i Management
<b>10</b>	Engineering Highlights
<b>11</b>	HIKI NŌ Highlights
<b>14</b>	Local Programs
<b>18</b>	Connecting and Engaging with Our Community
<b>20</b>	Financial Snapshot PBS Hawai'i Revenue Sources for FY2023
<b>22</b>	Grantors and Sponsors Lists
<b>23</b>	PBS Hawai'i Programming





October 10, 2023

At PBS Hawai'i, we like to say, **Home is Here.**

It is here where we cultivate stories of our Islands and share them with the world, where music fills our walls and ultimately your souls. It is here where we present transforming and healing discussions and where our keiki have their own space to inspire change.

In Fiscal Year 2023, we brought Hawai'i to the world in new and innovative ways. Through monthly broadcast programs like **Home is Here** and **Nā Mele**, and a rapidly growing and robust digital presence, we are celebrating and preserving our cherished mo'olelo ... the stories, traditions and voices that make Hawai'i special.

We are pleased to report we completed five new **Nā Mele** productions, featuring some of Hawai'i's best artists, including Grammy Award-winning slack key artist Jeff Peterson and the very talented Paula Fuga. A holiday concert at Palikū Theatre with Robert Cazimero and Kuana Torres Kahele, and a special in-studio performance by multi Nā Hōkū Hanohano Award winning Kulāiwi, the amazing trio of Lehua Kalima Alvarez of Nā Leo, Kawika Kahiapo and Shawn Kekoa Pimental. We wrapped up a phenomenal year with a magical evening with the Mākaha Sons at Halekulani's House Without A Key.

**HIKI NŌ on PBS Hawai'i** remains the central hub of a statewide student journalism network that includes teachers, mentors, community partners and funders. In Fiscal Year 2023, **HIKI NŌ on PBS Hawai'i** moved to a digital-first method of delivering student stories, then curating them into a 30-minute program. The major benefits of this change in the process were to create broadcast shows more thematically and reach a broader audience with stories formatted specifically for YouTube and other social media platforms. The response was amazing with immediate engagement across the organization's social media outlets.

May 30, 2023, marked the end of the school year and with it, the final regular show for season 14 of **HIKI NŌ on PBS Hawai'i**. We are pleased to share that in the 2022-2023 school year, **HIKI NŌ on PBS Hawai'i** student participation increased to 4,551 students, or 25 percent from the previous year, bringing student participation back to pre-pandemic levels. Of the 4,551 students served, 2,320 **HIKI NŌ on PBS Hawai'i** students were from 45, Title I schools.

Based on the increase in FY2023, we are projecting 3,800 students statewide will benefit from **HIKI NŌ on PBS Hawai'i** training in the 2023-2024 school year, nearly half will be from Title I schools.

An important part of our mission is providing civic engagement and public access to trusted information. Our weekly, **INSIGHTS ON PBS Hawai'i** community program, provides a vessel for respectful, productive and solution-minded conversations on relevant and timely issues.

In Fiscal Year 2023, we raised the bar by hosting six consecutive months of town hall meetings:

- January 26 - **KĀKOU: Hawai'i's Town Hall, Where Are the Workers?** As Hawai'i's economy recovers from the COVID-induced downturn, employers in both the public and private sectors struggle to find workers to fill vacancies.
- February 23 - **KĀKOU: Hawai'i's Town Hall, Climate Change - Our Disappearing Beaches** Pristine beaches that set Hawai'i apart are disappearing at an alarming rate. Is climate change to blame? Is it mismanagement? What must we do?
- March 30 - **KĀKOU: Hawai'i's Town Hall, Concealed Carry: Should the Government Restrict Where Guns are Allowed?** Hawai'i's four counties are issuing concealed carry permits to gun owners. Should the government designate so-called "sensitive locations"?
- April 27 - **KĀKOU: Hawai'i's Town Hall, How Do We Keep Habitual Offenders off the Road?** Habitual offenders wreaking havoc on Hawai'i roadways is not new and the problem is statewide. Why does this keep happening? What is being done to change that?
- May 25 - (Young adults/students served as moderators and guests) **KĀKOU: Hawai'i's Town Hall, Should I stay or Should I Go?** Thousands of Hawai'i students head out of state every year for an education and an opportunity. How do we get them to stay or to come back?
- June 29 - **Honolulu Rail: Worth the Wait?** The train is coming ... was it worth the wait?

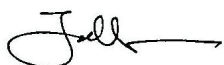
We continued to connect the past to the present through **PBS HAWAII CLASSICS** and **PBS HAWAII PRESENTS**, important programs that remind all of us to appreciate our history and embrace the future.

PBS Hawai'i is and will always be the most trusted source of news, cultural information and quality educational programs. As a public television station, we are responsible to protect journalistic integrity and the preservation of a free and independent public television system. National programs, including **PBS NewsHour**, **NOVA**, **Nature**, **Frontline**, **All Creatures Great and Small** and **Antiques Roadshow**, and iconic keiki content like **Sesame Street** and **Daniel Tiger's Neighborhood**, further support our important role in our diverse communities.

The talent-rich PBS Hawai'i team stands ready to deliver more mission-based programs and innovative initiatives while serving the community with integrity and unwavering commitment. On behalf of our Board of Directors and the entire staff, we extend our sincere gratitude for your continued trust and support in what we do.

On behalf of our Board of Directors and the entire staff, we extend our sincere gratitude for your continued trust and support in what we do.

With respect and aloha,



Jason Haruki  
Board Chair



Ron Mizutani  
President and CEO

## MISSION STATEMENT

PBS Hawai'i advances learning and discovery through storytelling that profoundly touches lives.

## HAWAI'I'S TELEVISION STATION

PBS Hawai'i is the Hawaiian Islands' **only** locally owned statewide public television station and the **only** member of the nationally trusted Public Broadcasting Service.

We are led by a statewide Board of Directors and a locally based team of management and staff. We are the **only** federally licensed statewide educational broadcaster in the Islands.

## PBS Hawai'i By the Numbers

**34**

Full-Time Staff

**1**

Part-Time Staff

**10**

Students (7 Production, 1 Engineering, 1 Editing, 1 Advancement)

**25**

Unpaid Statewide Board Members

**10**

Statewide Community Advisory Board Members

**341**

Volunteers

**526**

Volunteer Hours

**68**

Volunteer Event Days

**13,627**

Citizen Donors

**24**

Business Sponsors

**22**

Grantors



## BOARD OF DIRECTORS

*As of June 30, 2023*



**Jason H. Haruki**  
Chair



**Ryan Kaipo Nobriga**  
Vice-Chair



**Joy Miura Koerte**  
Secretary



**Kent Tsukamoto**  
Treasurer/  
Finance Chair



**Muriel Anderson**



**Jodi Endo Chai**



**James E. Duffy Jr.**



**AJ Halagao**



**Wilbert Holck**



**Siana Hunt**



**Torrie Inouye**



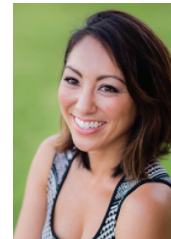
**Noelani Kalipi**



**Ian Kitajima**



**Robin Kobayashi**



**Ashley Takitani  
Leahey**



**Cheryl Ka'uhane  
Lupenui**



**Kevin Matsunaga**



**Theresia McMurdo**



**Jeff Mikulina**



**Rick Nakashima**



**Ku'uhaku Park**



**L. Candy Suiso**



**Harmonee  
Williams**



**Hinaleimoana  
Wong-Kalu**



**Kūha'o Zane**



## STATEWIDE COMMUNITY ADVISORY BOARD

*As of June 30, 2023*



**Shawn Malia**  
Kana'iaupuni, PhD  
Chair



**Ku'ulani Auld**



**Elif Beal**



**Chuck Boller**



**Dennis Bunda**



**Naomi Hazelton**



**Kainoa Horcajo**



**Ka'imi Namaielua**  
Kaupiko



**Lei Kihoi**



**Marissa Sandblom**

## MANAGEMENT

*As of June 30, 2022*



**Ron Mizutani**  
President and CEO



**Karen Yamamoto**  
Senior Vice President  
and CFO



**Chuck Parker**  
Vice President  
Content



**Christina  
Kanemoto Sumida**  
Vice President  
Advancement



**Jody Shiroma**  
Vice President  
Communications



**Robert Pennybacker**  
Vice President  
Learning Initiatives



**John Nakahira**  
Chief Engineer

## ENGINEERING HIGHLIGHTS

We made improvements to PBS Hawai'i's network infrastructure in FY23 with a heightened emphasis on security. Our network firewall and core switches were updated to take advantage of improved safety measures and monitoring technologies. The new equipment also improved the speed and capacity of the network.

The domain controller server was replaced to maintain secure, reliable access to the station's computer network. With protection as a continued top priority for our organization, the station's security system got a refresh with a new digital video recorder and video cameras.





# HIKI NŌ



## STUDENT REFLECTIONS

The 13th consecutive school year of **HIKI NŌ on PBS Hawai'i** ushered in a new paradigm in content delivery with Digital First Premieres of HIKI NŌ Stories. Student Voice, Youth Mental Health, Connection and Change have been the hallmarks of this past year for HIKI NŌ.



### CHANGE

As **HIKI NŌ on PBS Hawai'i** transitioned into a new era marked by relaxing COVID restrictions, we began Season 14 with a look back at the pandemic through the eyes of students in a 5-part series chronicling the COVID-19 global pandemic from a perspective unlike any other: straight from students' homes. This powerful series highlighted the importance of HIKI NŌ as an outlet for student voices during trying times and the value storytelling has on the mental health of students. This retrospective also allowed time to build up student stories in preparation for the launch of HIKI NŌ's Digital Premieres. This new approach to debuting student stories on PBS Hawai'i's YouTube channel, along with companion pieces on social media platforms, was the first step in spreading student voices to a younger and more diverse demographic as well as allowing stories to be more thematically curated into broadcast episodes.

### STUDENT VOICE

Stories from the unique perspective of Hawai'i's students have always been the cornerstone of HIKI NŌ. This year, like no other year, has been a showcase of creativity, insight and innovation through authentic storytelling by Hawai'i's youth. From personal reflections and stories of individual struggle to stories about how to create change in your community and fight institutional bias, stories from this season have highlighted not only the need for students to have a voice, but the importance of giving them the tools to do so effectively. Through the process of producing these stories, not only have they learned valuable production and life skills, but the process of reflecting on themselves and the people of their communities has resulted in better social emotional well-being and a greater sense of community.



# HIKI NŌ

PBS HAWAII



## YOUTH MENTAL HEALTH

Mental Health has always been a topic explored in HIKI NŌ stories. This year was no exception. Stories from students tackled themes that were important to them and they were able to share them. Some of them focused on topics that are difficult for anyone to talk about, much less present to an audience—such as suicide, self image or a parent struggling with cancer. More positive topics were highlighted as well, including connections with family, community and a story from our first home-schooled student that featured a cafe created to provide a safe space for teens who are struggling and provide free mental health service for them. The partnership HIKI NŌ fostered with Mental Health America of Hawai'i not only recognized HIKI NŌ students for their courage to raise their voices in difficult times, but has also provided training for teachers and PBS Hawai'i staff members and mentors to help better support the youth we serve.



## CONNECTION

This has been a year of reconnecting. In an effort to create deeper connections with our teachers, students and parents, as well as provide new opportunities for learning through the experience of on-camera presentations, PBS Hawai'i re-opened its doors to student hosts. In this season, all of our episodes were hosted by students from the PBS Hawai'i studio. Through the student hosts and our Class of 2023 shoots and focus groups, we have had the opportunity to reconnect in person with the teachers, students and parents that make HIKI NŌ what it is. Through a new email campaign and the creation of our "Get to Know" digital content, which features behind the scenes content of student hosts, we have created a greater connection between PBS Hawai'i and audiences across all our platforms. As students create stories, they create greater connections within their communities. HIKI NŌ on PBS Hawai'i has and continues to consider it a privilege to share those connections with our ever-expanding community.

# HIKI NŌ



## 2022 – 2023 Participating Schools

<b>Participating Schools</b>	<b>99</b>
<b>T = Title 1 Schools</b>	<b>48</b>
<b>N = New schools/teachers</b>	<b>3</b>

### O'ahu (56)

Āliamanu Middle School  
 Campbell High School  
 Dreamhouse 'Ewa Beach  
 Charter School  
 'Ewa Makai Middle School  
 Farrington High School <sup>T</sup>  
 Hawai'i Baptist Academy  
 Hawaii Technology Academy PCS  
 Hawaiian Mission Academy  
 Highlands Intermediate School  
 Holy Nativity School  
 Hongwanji Mission School  
 Honouliuli Middle School  
 Honowai Elementary School <sup>T</sup>  
 'Ilima Intermediate School <sup>T</sup>  
 Island Pacific Academy  
 Ka Waihona O Ka Na'auao PCS <sup>T</sup>  
 Ka'ahumanu Elementary School <sup>T</sup>  
 Ka'ala Elementary School <sup>T</sup>  
 Kailua Intermediate School  
 Kaimukī Middle School  
 Kaiser High School  
 Kalāheo High School  
 Kalākaua Middle School <sup>T</sup>  
 Kalani High School  
 Kamaile Academy PCS <sup>N, T</sup>  
 Kapolei High School  
 Keolu Elementary <sup>T</sup>  
 Leilehua High School <sup>T</sup>  
 Mālama Honua Public  
 Charter School <sup>T</sup>  
 Maryknoll School  
 McKinley High School <sup>T</sup>  
 Mililani Middle School  
 Moanalua High School  
 Moanalua Middle School  
 Nānākuli High &  
 Intermediate School <sup>T</sup>  
 Niu Valley Middle School  
 Pacific Buddhist Academy

Pearl City High School  
 Pearl City Highlands  
 Elementary School <sup>N</sup>  
 Punahou School  
 Radford High School  
 Roosevelt High School  
 Sacred Hearts Academy  
 Saint Louis School  
 SEEQS PCS  
 Stevenson Middle School <sup>T</sup>  
 Wahiawā Middle School <sup>T</sup>  
 Wai'ālae Elementary PCS  
 Waialua High and  
 Intermediate School  
 Wai'anae High School <sup>T</sup>  
 Wai'anae Intermediate School <sup>T</sup>  
 Waikiki Elementary School  
 Waimānalo Elementary &  
 Intermediate School <sup>T</sup>  
 Waipahu High School <sup>T</sup>  
 Washington Middle School <sup>T</sup>  
 Wheeler Middle School

### Homeschool (1)

Raphael and Georgine Stark

### Kaua'i County (7)

Chiefess Kamakāhelei  
 Middle School <sup>T</sup>  
 Island School  
 Kapa'a High School  
 Kapa'a Middle School <sup>T</sup>  
 Kaua'i High School  
 Ke Kula Niihau O Kekaha PCS  
 Waimea High School <sup>T</sup>

### Maui County (15)

H. P. Baldwin High School <sup>T</sup>  
 Hāna High &  
 Elementary School <sup>T</sup>  
 'Īao Intermediate School <sup>T</sup>  
 Kalama Intermediate School <sup>T</sup>  
 Kamehameha Schools  
 Maui High School  
 Kamehameha Schools

Maui Middle School  
 Lahaina Intermediate School <sup>T</sup>  
 Lahainaluna High School <sup>T</sup>  
 Maui High School  
 Maui Waena  
 Intermediate School <sup>T</sup>  
 Moloka'i High School <sup>T</sup>  
 Montessori School of Maui  
 Middle School  
 Pomaika'i Elementary School  
 Seabury Hall Middle School  
 St. Anthony School

### Hawai'i Island (20)

Connections PCS <sup>T</sup>  
 Ernest Bowen de Silva  
 Elementary School  
 Hawai'i Preparatory Academy  
 Hilo High School <sup>T</sup>  
 Hilo Intermediate School <sup>T</sup>  
 Honaunau Elementary School <sup>T</sup>  
 Honoka'a High &  
 Intermediate School <sup>T</sup>  
 Ka'u High School & Pahala  
 Elementary School <sup>N, T</sup>  
 Kea'au High School <sup>T</sup>  
 Kealakehe High School <sup>T</sup>  
 Kealakehe Intermediate School <sup>T</sup>  
 Konawaena High School <sup>T</sup>  
 Kua O Ka Lā New Century PCS,  
 Hilo <sup>T</sup>  
 Kua O Ka Lā New Century PCS –  
 Miloli'i Hipu'u Virtual  
 Academy Site <sup>T</sup>  
 Pahoa High and  
 Intermediate School <sup>T</sup>  
 Volcano School of Arts &  
 Sciences PCS <sup>T</sup>  
 Waiākea Elementary School <sup>T</sup>  
 Waiākea High School  
 Waiākea Intermediate School <sup>T</sup>  
 Waimea Elementary School <sup>T</sup>

## LOCAL PROGRAMS



### Insights on PBS Hawai'i

We dedicated our weekly live one-hour public affairs program to extensive election coverage through the primary and general elections of 2022 highlighting 27 races across the state. These included the Democratic and Republican primary

races for governor, the Maui County mayoral contest, State Senate races from three islands, county council races from three counties, State House races from multiple islands, the Office of Hawaiian Affairs, the race for the 2nd congressional seat and a look at Maui County Charter Amendment proposals. Insights also highlighted the dangers of Rat Lungworm Disease, an emerging and debilitating parasitic disease.

The program was tied-in with a Hawai'i-centric independent film about the disease called Accidental Host: The Story of Rat Lungworm Disease. Insights also highlighted several contentious issues heard during the legislative session including bills to curb government corruption, legalizing the recreational use of marijuana, banning flavored e-cigarettes, a proposal to abolish the Hawai'i Tourism Authority, the lack of affordable housing, expanding access to preschool and the future of Aloha Stadium.

We also looked at the growing fentanyl crisis in Hawai'i in which the panel included a woman who lost a teenage son to a fentanyl overdose and the state of mental health of Hawai'i's youth. That panel included a teenager who stutters who founded a non-profit that cares for people with speech challenges.

---

### Home is Here

This monthly 30-minute program shares stories of the diverse people, places, and cultures of Hawai'i. One show included the story of a Native Hawaiian-owned business which grows and sell native plants, the newly-hired University of Hawai'i football coach and a transplant from California who makes a living selling gourmet cookies. Other stories highlighted non-profits that help teenage runaways, catch and neuter stray cats, clean our local beaches, provide emergency medical care to injured native turtles, help the 1 in 6 Hawai'i adults who cannot read, and one that hires low-income local residents to plant, grow and prepare food. Other stories featured an Okinawan drum and dance group, a break dancing group training for the Olympics, a local high school football player from Moloka'i who was recruited by and plays for a big five conference school on the mainland. One program was devoted to the cataloging at the Hawai'i State Archives of two donated vintage collections of Hawaiian music that included rare pieces from the early 1900s.







## Nā Mele

This program showcases Hawai'i's music. We featured Maui-born slack key artist Jeff Peterson, Paula Fuga and her six-piece band along with Kulāiwi, which includes Shawn Pimental, Kawika Kahiapo, Lehua Kalima Alvarez and hula dancer Pono Fernandez. We also produced two Nā Mele pledge programs. One, with Robert Cazimero and Kuana Torres Kahele was recorded at Palikū Theatre at Windward Community College, and the other was a concert with Mākaha Song (Jerome Koko, Kimo Artis and Hanalē Ka'anapu) recorded at Halekulani's House Without A Key.

## KĀKOU: Hawai'i's Town Hall

PBS Hawai'i presented six live 90-minute episodes of KĀKOU: Hawai'i's Town Hall. The programs featured panels with varied voices about the topic at hand as well as questions sent in by viewers via phone, email, and social media.

The first episode was called, **Where Are the Workers?** It focused on the problem businesses, particularly small businesses, and even governments are having filling vacancies. The show included business and government leaders, economists and workers.

The second episode was titled, **Our Disappearing Beaches.** The show highlighted the growing problem of receding shorelines across the state due to climate change. Included on the panel were climate change scientists, state coastal management personnel, private business representatives, Native Hawaiian cultural experts and property owners.

We called episode three, **Concealed Carry: Should the Government Restrict Where Guns are Allowed?** This show focused efforts by state and county lawmakers to pass laws specifying where citizens with a valid license to carry a concealed gun can take the gun. Panelists included state and county lawmakers, gun rights advocates, gun control advocates, attorneys and a retired state judge who is an expert in constitutional law.

Episode 4 was called, **How Do We Keep Habitual Offenders off Our Roads?** The show was spawned by the death of teenage high school student who was killed in a hit-and-run crash while she was crossing the street to get to school while in a marked crosswalk and with the light. The suspected driver had been cited 164 times over several years for multiple traffic offenses including driving without a license. In the same week, another pedestrian was severely injured in a hit-and-run crash on another island. The suspected driver in that crash also had multiple citations including driving without a license. The panel included police chiefs from two



islands, a county prosecutor, a retired judge, defense attorneys, a substance abuse counselor and the mother of the teenager who died.

We called episode five, **Should I Stay or Should I Go?** This program was a discussion about the long-time concern of young people going to the mainland after graduating from high school and not coming back due to the lack of opportunity here and low paying jobs. The panel included several 2023 high school graduates from across the state, graduates from prior years, the president of the 10-campus University of Hawai'i system, an economist, a high school guidance counselor and the head of a non-profit that works to keep youth in Hawai'i by finding affordable housing. Two of the student panelists doubled as co-moderators of the show.

Episode six focused on the opening of the first leg of Honolulu's elevated fixed-rail mass transit system, several years late and billions of dollars over budget. We called the program, **Honolulu Rail: Worth the Wait?** The panel featured the head of the city's rapid transit division, representative of communities along the route that opened, a media representative who has reported extensively on the rail project and other community leaders.



### PBS Hawai'i Presents

PBS Hawai'i showcased seven independent films through the year. Four of them were made by first-time feature length filmmakers. They include a film called **School Stories**, which as actually two short films put together two elementary schools on separate islands. One story was about Ke'elikōlani Middle School in Honolulu which was renamed in honor of, Princes Ruth Ke'elikōlani, who was part of the Hawaiian Monarchy. The second story was called **Sustainability in Action** which focused on the program at Waimea High School on Kaua'i that provides students hand-on training in Native Hawaiian farming techniques.

Another film was mentioned earlier in this report was **Accidental Host: The Story of Rat Lungworm Disease**. This film told the story of the emerging parasitic disease that thrives in tropical locations like Hawai'i.

**Jeri** is a film that follows a young woman who trained for, competed in and won the women's fireknife championship at Polynesian Cultural Center.

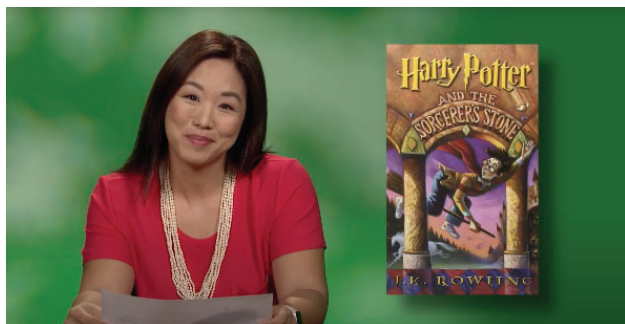
**Himalayan Prayer for World Peace** is the latest film by Maui filmmaker Tom Vendetti. It takes viewers on a pilgrimage through remote areas of India, Nepal and Tibet and highlights religious customs of the region.

**Keep It A Secret** explained the birth of surfing in Ireland spearheaded by enthusiasts who saw an opportunity and researched techniques of the sport and business of making surfboards in Hawai'i and California.

**The Queen's Influence: The Vanishing Culture of Hiko in Tonga** is a film about the art of hiko, or juggling, in the Kingdom of Tonga. Hiko dates back thousands of years and is practiced only by women.

## PBS Hawai'i Classics

In November of 2022, PBS Hawai'i launched PBS Hawai'i Classics which runs most Wednesdays at 7:30 pm. Classics are vintage, archived programs produced decades ago by Hawai'i Public Television. They include **Spectrum Hawai'i**, which ran from 1983 to 1998 and **Pau Hana Years** which ran from 1966 to 1982. The programs featured Native Hawaiian cultural practices, revered entertainers, business leaders, neighborhood, the arts, various cultures that make Hawai'i home and a whole lot more.



## GET CAUGHT READING

PBS Hawai'i continues to produce GET CAUGHT READING spots that range from 30 seconds to 90 seconds and feature people from all walks of life reading a passage from a favorite book or poem. Animation of the spoken words accompany the read to encourage reading for all ages.



## CONNECTING WITH OUR COMMUNITY, NEAR AND FAR

This past year, we continued to increase our reach and communicate our story beyond our broadcast and beyond our state.

### Connecting Across the World

#### Independent Lens

In partnership with **Independent Lens**, we hosted virtual film screenings. These free screenings allowed us to further our reach and generate awareness on a variety of subjects affecting our local communities and our nation.

These included issues centered around spinal injuries, drug abuse, social causes and bridge-building through small community actions.

Panel discussions were held with local representatives and attendance continued to grow through our virtual platform, reaching statewide and worldwide audiences.

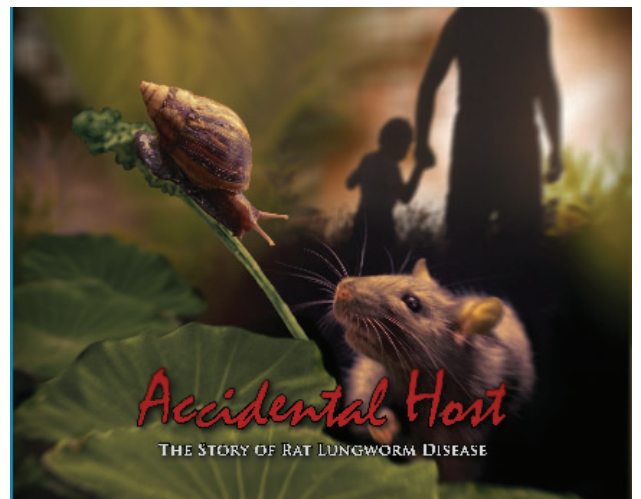


#### PBS Hawai'i Presents Screenings

We also engaged with our community through virtual screenings. These included the screening of two new films.

**Accidental Host: The Story of Rat Lungworm Disease** told the story of the emerging parasitic disease that thrives in tropical locations like Hawai'i.

We also hosted **Keep It A Secret**, a film that told the birth of surfing in Ireland spearheaded by enthusiasts who saw an opportunity and researched techniques of the sport and business of making surfboards in Hawai'i and California.







## FINANCIAL SNAPSHOT

### Major Funding Sources

#### COMMUNITY SUPPORT CONTRIBUTIONS

Throughout FY23, individuals and businesses continued to step up to support our station in fulfilling its mission statewide. This support allowed us to diversify our audiences through the development of new content and enhance existing ones across broadcast and digital platforms.

- Our average annual individual gift is \$152.35.
- We saw a slight increase in the number of individual donors - over 13,500 supporters.

#### BUSINESS SUPPORT

Although businesses in Hawai'i continued to face workforce scarcities and reduced resources, these organizations continued to believe in our mission of strengthening our communities.

By supporting our mission as Hawai'i's storyteller, we were able to provide quality, educational, entertaining and cultural in a safe, trusted space.

We are grateful the Hawai'i State Department of Commerce and Consumer Affairs continued its practice of directing 1% of the cable franchise fees from two cable companies directly to PBS Hawai'i. The companies pay franchise fees in return for using public land and air rights for their businesses. We have listed these funds in the Business Support section of the revenue sources.

#### FOUNDATION SUPPORT

Charitable foundations provided operational and restricted grants which are vital to the organization in funding:

- Multi-year support of HIKI NŌ: Hawai'i's New Wave of Storytellers

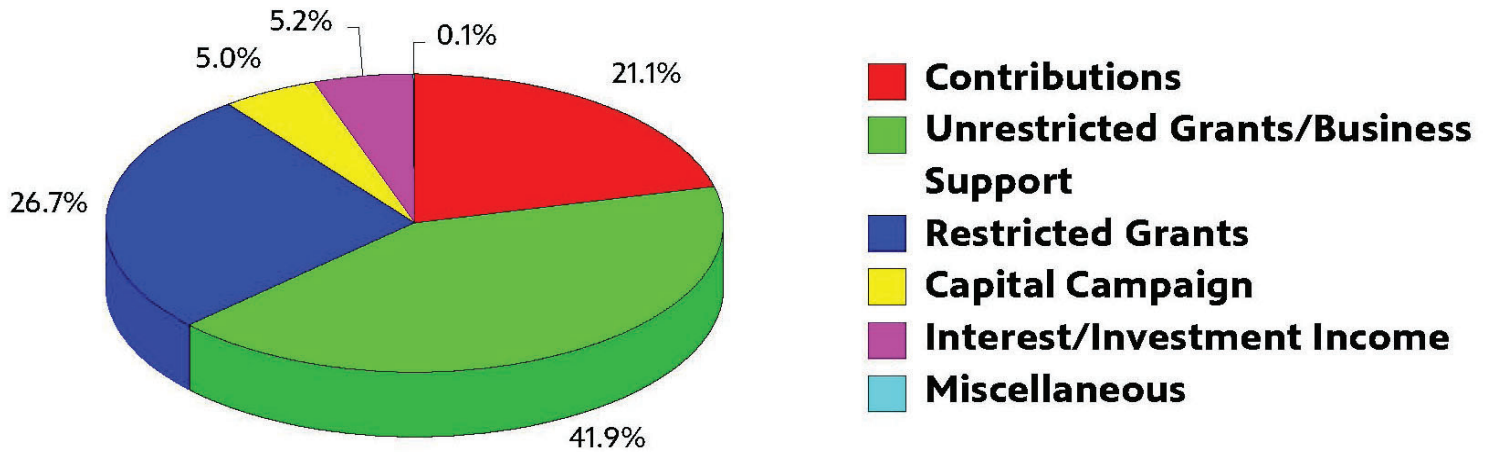
#### CORPORATION FOR PUBLIC BROADCASTING

The Community Service Grant is provided to us by the Corporation for Public Broadcasting, a nonprofit entity. The Corporation for Public Broadcasting continues to receive funding from Congress in support of public television and public radio stations across the nation. The portion we receive is approximately 15% of our operating budget and included with our restricted grants. The expenditures for this grant is contained in the provisions of the Community Service Grant.



## REVENUE SOURCES

FY2023



Contributions	2,102,191
Unrestricted Grants/Business Support	4,176,177
Restricted Grants	2,655,853
Capital Campaign	500,000
Interest/Investment Income	521,153
Miscellaneous	5,977
<b>TOTAL</b>	<b>9,961,351</b>

### GRANTORS FY23

Alaska Airlines Foundation  
Bank of Hawai'i Foundation  
Cooke Foundation, Ltd.  
George Mason Fund of the Hawai'i Community Foundation  
Hazel H. Takumi Foundation  
HouseMart Family Fund of the Hawai'i Community Foundation  
Koaniani Fund of the Hawai'i Community Foundation  
State Farm  
Stupski Foundation  
The Freeman Foundation  
The Kosasa Foundation

### SPONSORS LIST FY23

Alaska Airlines Foundation  
Atlas Insurance  
Atsuhiko and Ina Goodwin Tateuchi Foundation  
Bank of Hawai'i Foundation  
Bendon Family  
Cades Foundation, The  
Cades Schutte LLP  
Carlsmith Ball LLP  
Cooke Foundation, Limited  
First Hawaiian Bank  
First Insurance Company of Hawaii  
The Freeman Foundation  
George Mason Fund of the Hawai'i Community Foundation  
Hawaii RT Restaurants (Ruby Tuesday Hawaii)  
Hawaiian Airlines  
Hawaiian Electric  
John R. Halligan Charitable Fund  
The Kosasa Foundation  
Locations Hawaii  
Matson Foundation  
PASHA HAWAII  
Stupski Foundation  
Ulupono Initiative  
Young Brothers

## PBS HAWAII PROGRAMMING



Craft in America

### CULTURE AND ART

35th Hispanic Heritage Awards  
 87th Annual Anisfield-Wolf Book Awards  
 A Bug in the System: Artist Ohtake Shinro  
 Actually, Iconic: Richard Estes  
 AFROPOP: THE ULTIMATE  
     CULTURAL EXCHANGE (Series)  
 ANIME SUPERNOVA (Series)  
 ART IN THE TWENTY-FIRST CENTURY (Series)  
 ARTICULATE HOUR (Series)  
 ARTICULATE WITH JIM COTTER (Series)  
 Arts in Context: Flamenco India  
 Bagpipes Calling!  
 Barakan Discovers the Samurai of the Sea  
 BARE FEET WITH MICKELA MALLOZZI (Series)  
 BEGIN JAPANOLOGY (Series)  
 BEYOND THE CANVAS (Series)  
 CERAMIC TREASURES (Series)  
 CHAMBER MUSIC SOCIETY RETURNS (Series)  
 CRAFT IN AMERICA (Series)  
 CULTURE QUEST (Series)  
 DESIGN TALKS PLUS (Series)  
 DESIGN X STORIES (Series)  
 Dia De Los Muertos  
 Easter in Art  
 GRAND SUMO HIGHLIGHTS (Series)  
 ICON: MUSIC THROUGH THE LENS (Series)  
 JAPANOLOGY PLUS (Series)  
 KABUKI KOOL (Series)  
 LIDIA CELEBRATES AMERICA (Series)  
 Los Hermanos/The Brothers

Masters of Rhythm: The Afro-Peruvian Way  
 Mona Lisa is Missing  
 REEL SOUTH (Series)  
 RICK STEVES ART OF EUROPE (Series)  
 SKINDIGENOUS (Series)  
 Starstruck: Gene Kelly's Love Letter to Ballet  
 SUMOPEDIA (Series)  
 Tamahagane: Miracle Steel of Japanese Swords  
 TELL ME MORE WITH KELLY CORRIGAN (Series)  
 THE MARK OF BEAUTY (Series)  
 The Unknown Master of Restoration  
 UKIYOE EDO-LIFE (Series)  
 We Were Hyphy

### DRAMA

Agatha and the Curse Of Ishtar  
 Agatha and the Midnight Murders  
 Agatha and the Truth Of Murder  
 ALL CREATURES GREAT AND SMALL  
     ON MASTERPIECE (Series)  
 ANNIKA ON MASTERPIECE (Series)  
 BEFORE WE DIE (Series)  
 BOLEYNs: A SCANDALOUS FAMILY (Series)  
 BROADCHURCH (Series)  
 CALL THE MIDWIFE (Series)  
 COBRA (Series)  
 ENDEAVOUR ON MASTERPIECE (Series)  
 GRANTCHESTER ON MASTERPIECE (Series)  
 GUILT ON MASTERPIECE (Series)  
 HOTEL PORTOFINO (Series)  
 HOW TO BE LIKEABLE IN A CRISIS (Series)



GRANTCHESTER ON MASTERPIECE



JAMAICA INN (Series)  
MAGPIE MURDERS ON MASTERPIECE (Series)  
MARIE ANTOINETTE (Series)  
MISS SCARLET AND THE DUKE  
ON MASTERPIECE (Series)  
RIDLEY (Series)  
SANDITON ON MASTERPIECE (Series)  
The Trick  
TOM JONES ON MASTERPIECE (Series)  
VAN DER VALK ON MASTERPIECE (Series)  
VICTORIA & ALBERT: THE WEDDING (Series)  
VIENNA BLOOD (Series)  
WHAT TO DO WHEN SOMEONE DIES (Series)

## DOCUMENTARIES

10 YEARS WITH HAYAO MIYAZAKI (Series)  
A Thousand Pebbles on the Ground  
AFTER ACTION (Series)  
AMERICAN EXPERIENCE (Series)  
AMERICAN MASTERS (Series)  
Anahita: A Mother's Journey  
Anisfield-Wolf Book Awards  
Awadagin Pratt: Black In America  
Awakening in Taos: The Mabel Dodge Luhan Story  
Big Sonia  
Bloodline  
Bookstour  
Come Back Anytime  
CORE KYOTO (Series)  
Don Lewis and the Live Electronic Orchestra  
Double Dummy  
Elmore Leonard: But Don't Try To Write  
Elvis and the USS Arizona  
End-Of-Life Guardians  
Facing Suicide  
FAMILY PICTURES USA (Series)  
Fanny: The Right to Rock  
Feelings Are Facts: The Life of Yvonne Rainer  
Finding the Virgo



Fire on the Hill: The Cowboys of South Central LA  
FOUR SEASONS IN JAPAN (Series)  
Girl Talk: A Local, USA Special  
Guru Nanak: The Founder of Sikhism  
How Saba Kept Singing  
ICON: MUSIC THROUGH THE LENS (Series)  
IMPOSSIBLE BUILDS (Series)  
In a Different Key  
In the Water, Behind the Lens  
IN THEIR OWN WORDS (Series)  
INDEPENDENT LENS (Series)  
Isamu Noguchi's Unfinished A-Bomb Cenotaph  
Issey Miyake the Human Inside the Clothes  
Ito Sisters: An American Story  
Journeys of Harry Crosby  
Kasturba Gandhi: Accidental Activist  
LIDIA CELEBRATES AMERICA (Series)  
Life Story of Doc Ball  
Magnificent Beast  
Making Menuhin  
Me & My Robot  
Meet and Eat At Lee's Garden  
Olympia  
Petit Rat  
POV (Series)  
POV SHORTS (Series)  
Rise of the Bolsonaros  
Rising Against Asian Hate: One Day in March  
Roadtrip Nation: Caring Forward  
Ron Carter: Finding the Right Notes

The US and the Holocaust

Searching: Our Quest for Meaning  
in the Age of Science  
Season to Remember:  
The Baseball Boys of Mon City  
SEASONING THE SEASONS (Series)  
Send Me  
Shakespeare's Tomb  
Shohei Ohtani: A Baseball Virtuoso  
Signing Black in America  
Sky Blossom: Diaries of the  
Next Greatest Generation  
Stories in Thread  
The Fallen Astronaut  
The House that Norm Built  
THE LATINO EXPERIENCE (Series)  
The Letter: A Message for Our Earth  
TIME-LAPSE JAPAN (Series)  
Tuning the Brain with Music  
Unconditional: Healing Hidden Wounds  
Unearthing Ogawa  
VOCES ON PBS (Series)  
Warrior Tradition  
WORLD'S GREATEST CEMETERIES (Series)  
Youth V Gov  
Zelenskyy: The Man Who Took on Putin

## HISTORY AND GEOGRAPHY

Alternative Facts: The Lies of Executive Order 906  
AMERICA OUTDOORS WITH  
BARATUNDE THURSTON (Series)



Before They Take Us Away



Armed with Language  
Becoming Frederick Douglass  
Before They Take Us Away  
BREAKTHROUGH: THE IDEAS THAT CHANGED  
THE WORLD (Series)  
Buffalo Soldiers: Fighting on Two Fronts  
Charles R: The Making of a Monarch  
Chasing Voices  
FIGHT THE POWER: HOW HIP HOP  
CHANGED THE WORLD (Series)  
FINDING YOUR ROOTS (Series)  
First Attack Ads: Hollywood vs. Upton Sinclair  
Harbor from the Holocaust  
Harriet Tubman: Visions of Freedom  
HISTORY DETECTIVES (Series)  
ICONIC AMERICA: OUR SYMBOLS AND STORIES  
WITH DAVID RUBENSTEIN (Series)  
Ida B. Wells: American Stories  
IN THEIR OWN WORDS (Series)  
Lifeline: Pearl Harbor's Unknown Hero  
LUCY WORSLEY INVESTIGATES (Series)  
LUCY WORSLEY'S ROYAL MYTHS &  
SECRETS (Series)  
MAKING BLACK AMERICA:  
THROUGH THE GRAPEVINE (Series)  
MARGARET: THE REBEL PRINCESS (Series)  
Misty Experiment: The Secret Battle for  
the Ho Chi Minh Trail  
MY GRANDPARENTS' WAR (Series)  
NATIONAL PARKS OF JAPAN (Series)

Queen Elizabeth: A Royal Life -  
A PBS Newshour Special  
QUEEN ELIZABETH'S SECRET AGENTS (Series)  
Remember Pearl Harbor  
Seabees on Iwo Jima  
Secrets of Britain  
Secrets of Chatsworth  
SECRETS OF THE DEAD (Series)  
Secrets of the Tower of London  
Secrets of Westminster  
Training for Freedom  
Tuskegee Airmen: Return to Ramitelli  
TUTANKHAMUN: ALLIES & ENEMIES (Series)  
U.S. AND THE HOLOCAUST (Series)  
WONDERS OF MEXICO (Series)

### ENTERTAINMENT

ANTIQUES ROADSHOW (Series)  
ANTIQUES ROADSHOW RECUT (Series)  
Carpenters: Close to You  
Christmas at DePaul  
Country Pop Legends  
Dean Martin and Frank Sinatra Family Christmas  
Ella Fitzgerald: Just One of Those Things  
Ella Wishes You a Swinging Christmas  
with Vanessa Williams  
Frankie Valli & The Four Seasons: A Life on Stage  
GRAND SUMO HIGHLIGHTS (Series)  
Jon Stewart: The Mark Twain Prize



The Great American Recipe

Last of the Breed  
O Holy Night: Christmas with  
the Tabernacle Choir  
On Broadway  
One Voice: The Songs We Share  
Repeat The Sounding Joy: A Concordia Christmas  
Sergio Mendes & Friends: A Celebration  
St. Olaf Christmas Festival: Love Divine  
THE GREAT AMERICAN RECIPE (Series)  
This Land is Your Land  
Yellowstone Symphony

### KIDS

ALMA'S WAY (Daily)  
ARTHUR (Daily)  
CLIFFORD THE BIG RED DOG (Daily)  
CURIOUS GEORGE (Daily)  
CYBERCHASE (Weekly)  
DANIEL TIGER'S NEIGHBORHOOD (Daily)  
DINOSAUR TRAIN (Daily)  
DONKEY HODIE (Daily)  
ELINOR WONDERS WHY (Daily)  
HERO ELEMENTARY (Daily)  
Let's Go Luna! (Daily)  
MISTER ROGERS' NEIGHBORHOOD (Weekly)  
MOLLY OF DENALI (Daily)  
NATURE CAT (Daily)  
ODD SQUAD (Daily)  
PEG + CAT (Weekly)  
PINKALICIOUS & PETERRIFIC (Daily)  
Ready Jet Go! (Daily)  
ROSIE'S RULES (Daily)  
SESAME STREET (Daily)  
SID THE SCIENCE KID (Weekly)  
SPLASH AND BUBBLES (Weekly)  
SUPER WHY! (Weekly)  
THE CAT IN THE HAT KNOWS  
A LOT ABOUT THAT! (Weekly)  
THE NEW ADVENTURES OF ROCKIE  
AND HER FRIENDS (Daily)



Rosie's Rules



WILD KRATTS (Daily)  
WORDGIRL (Weekly)  
WORDWORLD (Weekly)  
WORK IT OUT WOMBATS! (Daily)  
XAVIER RIDDLE AND THE SECRET MUSEUM (Daily)

## LOCAL AND REGIONAL PRODUCTIONS

Black Grace: From Cannon's Creek  
to Jacob's Pillow  
Canefield Songs: Holehole Bushi  
Dear Thalia  
FAMILY INGREDIENTS (Series)  
Happy Birthday Tutu Ruth  
Hawaiiana  
HIKI NŌ (Series)  
Himalayan Prayer for World Peace  
Holo Mai Pele  
HOME IS HERE (Series)  
Homealani  
Homegrown Hawai'i  
Ho'oku'ikahi: To Unify as One  
INSIGHTS ON PBS HAWAII (Series)  
Jeri  
Kai Piha: Ka'ahale Ma Waikiki  
Kai Piha: Nā Loko I'a  
KĀKOU - HAWAII'S TOWN HALL (Series)  
Keep It a Secret  
Keola Beamer: Mālama Ko Aloha (Keep Your Love)  
Lahaina: Waves Of Change  
Li'a: The Legacy of a Hawaiian Man  
Listen to the Forest

LIVE FROM THE EMPTY PALACE (Series)  
Living Your Dying  
Luther Kahekili Makekau: A One Kine Hawaiian Man  
MATT LEVI INVESTIGATES (Series)  
NĀ MELE (Series)  
No Nā Mamo: For the Descendants  
Nona Beamer and Her Family  
Ohta-San: Virtuosity and Legacy  
On the Radio  
Our Makawao  
PACIFIC HEARTBEAT (Series)  
Patsy Mink: Ahead of the Majority  
PBS HAWAII CLASSICS (Series)  
Queen's Influence -  
The Vanishing Culture of Hiko in Tonga  
The Quietest Place on Earth  
Reel Wāhine of Hawai'i 3  
Scaling Up: Hawai'i's Food Future  
School Stories: Ke'elikolani &  
Sustainability in Action  
Shinmachi: Stronger Than a Tsunami  
Skin Stories  
Songs of Joy: A PBS Hawai'i Holiday Celebration  
The Hawaiian Room  
Voices Behind Barbed Wire: Stories from Hawai'i  
We, The Voyagers: Our Moana  
We, The Voyagers: Our Vaka  
Words, Earth & Aloha:  
The Source Of Hawaiian Music



Keep it a Secret

Great Performances at the MET



## NEWS AND PUBLIC AFFAIRS

AMANPOUR AND COMPANY (Series)  
AMERICAN VETERAN (Series)  
ASIA INSIGHT (Series)  
BBC NEWS (Series)  
BIZ STREAM (Series)  
Coronation: A Day to Remember  
DAVID RUBENSTEIN SHOW: PEER TO PEER  
CONVERSATIONS (Series)  
DEEPER LOOK FROM NEW YORK (Series)  
DIRECT TALK (Series)  
FIRING LINE WITH MARGARET HOOVER (Series)  
FRONTLINE (Series)  
HIDING IN PLAIN SIGHT:  
    YOUTH MENTAL ILLNESS (Series)  
Hiroshima Peace Memorial Ceremony  
HISTORY WITH DAVID RUBENSTEIN (Series)  
NEWSLINE (Series)  
NEWSLINE IN DEPTH (Series)  
PBS NEWS WEEKEND (Series)  
PBS NEWSHOUR (Series)  
Ricochet: An American Trauma  
State Funeral of HM Queen Elizabeth II  
THE JANUARY 6TH HEARINGS (Series)  
THE OPEN MIND (Series)  
TO THE CONTRARY WITH BONNIE ERBE (Series)  
Vote 2022: Election Night Special  
WASHINGTON WEEK (Series)

## PERFORMANCE

A Capitol Fourth  
A St. Thomas Christmas  
AMERICAN ANTHEMS (Series)  
Anthony Williams' Urban Nutcracker  
AUSTIN CITY LIMITS (Series)  
Bela Fleck: My Bluegrass Heart  
Billy Joel: Live at Yankee Stadium  
Black Broadway:  
    A Proud History, A Limitless Future  
Bob Dylan: Shadow Kingdom  
Burt Bacharach: A Life in Song  
Carole King: Home Again – Live in Central Park  
Celine Dion:  
    Taking Chances World Tour the Concert  
Coldplay: Live in Sao Paulo  
DAVID HOLT'S STATE OF MUSIC (Series)  
Doobie Brothers:  
    50th Anniversary at Radio City Music Hall  
Eliades Ochoa: Live at Casa De La Trova  
Elvis Presley: '68 Comeback Special  
Foreigner: Double Vision – Then and Now  
FRONT AND CENTER (Series)  
GREAT PERFORMANCES (Series)  
GREAT PERFORMANCES AT THE MET (Series)  
Il Volo: Tribute to Ennio Morricone  
IN CONCERT AT THE HOLLYWOOD BOWL (Series)  
International Jazz Day From the United Nations  
Jon Stewart: The Mark Twain Prize  
Joni Mitchell:  
    The Library of Congress Gershwin Prize  
Les Misérables 25th Anniversary Concert at the O2  
Lionel Richie:  
    The Library of Congress Gershwin Prize



Mariah Carey – Live at the Tokyo Dome

Little Feat: Celebrating Waiting for  
Columbus at The Ryman  
Mannheim Steamroller 30/40 Live  
Mariah Carey: Live at the Tokyo Dome  
Masterpieces Performed by  
NHK Symphony Orchestra  
MY MUSIC WITH RHIANNON GIDDENS (Series)  
National Memorial Day Concert  
NEXT AT THE KENNEDY CENTER (Series)  
NHK Symphony Orchestra Family Concert  
Nitty Gritty Dirt Band:  
The Hits, The History & Dirt Does Dylan  
One Voice: The Songs We Share  
Paul Anka: His Hits and a Tribute to Frank Sinatra  
Rolling Stones: A Bigger Bang –  
Live on Copacabana Beach  
Santana Live at the US Festival  
Songwriting with Soldiers  
The Nutcracker and the Mouse King  
Tower Of Power: 50 Years of Funk and Soul  
Ukrainian Freedom Orchestra  
at the Kennedy Center  
United In Song 2022:  
Ringing in the New Year Together  
Willie Nelson: Live at Budokan  
Yoshiki: Live at Carnegie Hall



Alzheimer's: What You Can Do



## SCIENCE, NATURE AND HEALTH

Accidental Host:

The Story of Rat Lungworm Disease  
Aging Matters: Companionship & Intimacy  
Alzheimer's: What You Can Do  
Below the Belt: The Last Health Taboo  
CHANGING PLANET (Series)  
COLOMBIA: WILD AND FREE (Series)  
DOCTOR'S INSIGHT (Series)  
Earthshot Prize 2022  
EUROPE'S NEW WILD (Series)  
EXPEDITION WITH STEVE BACKSHALL (Series)  
FOOD PRINCIPLE (Series)  
Golden Eagles: Witnesses to a Changing West  
GREEN PLANET (Series)  
LIFE FROM ABOVE (Series)  
Lion: The Rise And Fall of the Marsh Pride  
MAGICAL LAND OF OZ (Series)  
Magnificent Beast  
Medicating Normal  
NATURE (Series)  
NEANDERTHAL (Series)  
NOVA (Series)  
Ocean Souls  
PLANET CALIFORNIA (Series)  
PLANTS BEHAVING BADLY (Series)  
PREHISTORIC ROAD TRIP (Series)  
RIVERS OF LIFE (Series)  
SCIENCE VIEW (Series)  
SECOND OPINION WITH JOAN LUNDEN (Series)



CURIOUS TRAVELER



The Secret Science of Sewage  
WHEN DISASTER STRIKES (Series)  
WILD SCANDINAVIA (Series)  
WILD WEATHER (Series)  
Zeroing In: Carbon Neutral 2050

## TRAVEL, COOKING, AND DIY

AERIAL EGYPT (Series)  
AMERICAN WOODSHOP (Series)  
AMERICA'S TEST KITCHEN  
    FROM COOK'S ILLUSTRATED (Series)  
ASK THIS OLD HOUSE (Series)  
AT ONE WITH NATURE:  
    NATIONAL PARKS OF JAPAN (Series)  
BEST OF THE JOY OF PAINTING (Series)  
Christmastime in New Orleans  
CHRISTOPHER KIMBALL'S  
    MILK STREET TELEVISION (Series)  
CLASSICAL STRETCH: BY ESSENTRICS (Series)  
COOK'S COUNTRY (Series)  
CURIOUS TRAVELER (Series)  
CYCLE AROUND JAPAN (Series)  
DINING WITH THE CHEF (Series)  
GARDENFIT (Series)  
GREAT MUSLIM AMERICAN ROAD TRIP (Series)  
JAPAN FROM ABOVE: UP CLOSE (Series)  
JAPANOLOGY PLUS (Series)  
JOSEPH ROSENDO'S TRAVELSCOPE (Series)  
JOURNEYS IN JAPAN (Series)  
LA FRONTERA WITH PATI JINICH (Series)

LIDIA'S KITCHEN (Series)  
LUCKY CHOW (Series)  
LUNCH ON! (Series)  
MAKE48 (Series)  
MARIA'S PORTUGUESE TABLE (Series)  
Mary Berry's Ultimate Christmas  
MOTORWEEK (Series)  
MOVEABLE FEAST WITH RELISH (Series)  
PATI'S MEXICAN TABLE (Series)  
Rick Steves Egypt: Yesterday & Today  
Rick Steves European Christmas  
SAMANTHA BROWN'S PLACES TO LOVE (Series)  
SARA'S WEEKNIGHT MEALS (Series)  
SIMPLY MING (Series)  
STEVEN RAICHLEN'S PROJECT FIRE (Series)  
Tanzania: The Royal Tour  
The Herriot Way  
THIS OLD HOUSE (Series)  
TRAILS TO OISHII TOKYO (Series)  
WOODSMITH SHOP (Series)



#### **ABOUT US**

PBS Hawai'i advances learning and discovery through storytelling that profoundly touches lives. Major support of the station comes from individuals, businesses, government and charitable foundations of Hawai'i.

#### **PBS HAWAII**

315 Sand Island Access Road  
Honolulu, HI 96819-2295  
808.462.5000 Toll Free: 800.238.4847

#### **WEBSITE**

[pbshawaii.org](http://pbshawaii.org)

PBS Hawai'i, a member of the Public Broadcasting Service (PBS), is a community-supported, non-commercial public television station broadcasting throughout the State of Hawai'i.