



PBS HAWAII

ANNUAL REPORT

JULY 2024 – JUNE 2025



CONTENTS



3	CEO and Board Chair Letter
6	PBS Hawai'i At-A-Glance
7	PBS Hawai'i Leadership
7	Board of Directors
8	Statewide Community Advisory Board Management
9	Fiscal Year Highlights
9	Engineering
10	HIKI NŌ on PBS Hawai'i
13	Local Programs
20	Community Engagement
22	Revenue Report
23	Grantors and Sponsors
24	PBS Hawai'i Programming

Aloha,

At PBS Hawai'i, storytelling is not just what we do – it's how we serve. Whether through compelling documentaries, trusted news, live Hawaiian music, or student-driven content, our role as Hawai'i's only locally owned statewide television station remains focused on uplifting the voices of our diverse communities.

Fiscal Year 2025 was a time of resilience and growth. While federal threats to public media funding created uncertainty across the country, PBS Hawai'i leaned into its mission with renewed energy. We continued to be a dependable source of education, civic dialogue and cultural preservation, rooted in trust and grounded in community.

Strengthening Our Commitment to Hawai'i

Throughout the year, we elevated diverse stories through legacy series and new productions. In FY2025, our beloved Hawaiian music program **Nā Mele** showcased many of Hawai'i's top musical artists, including a very special program commemorating 25 years of this iconic series.

We featured many of the giants that have graced our **Nā Mele** stage – legendary names like Auntie Genoa Keawe, The Brothers Cazimero, Ledward Kaapana and Jerry Santos. We also highlighted rising talent, such as seven-time Nā Hōkū Hanohano Award winner Kala'e Parish and Walea, connecting generations through mele. We closed the fiscal year with a live pledge concert featuring Jerry Santos from Halekulani's House Without A Key, our most successful local fundraising program post-pandemic, a reflection of our community's trust and support.

Independent storytelling through **PBS Hawai'i Presents** also grew substantially. We showcased several films, including one produced by our own PBS Hawai'i team: *Pu'uwai Haokila: The Story of How Hawai'i Shaped Modern Music*. Narrated by Raiatea Helm, this documentary explores Hawai'i's deep global impact on modern music, despite the political struggles faced at home.

Ongoing series like **Home is Here**, our monthly program, continued to highlight the people and places that define our islands including segments like Queen's Medical Center Healing Through Art, which showcased the richness of island life.

PBS Hawai'i Classics sustained momentum with rich profiles of local figures and archival gems from *Spectrum Hawai'i* and *Pau Hana Years*. These programs reinforce PBS Hawai'i's commitment to place-based, community-centered content.

Engaging and Empowering Learners

Our statewide student news initiative, **HIKI NŌ on PBS Hawai'i**, engaged 4,429 students at 84 schools, including 42 Title I schools. The program aired 22 new half-hour episodes and premiered nearly 100 digital stories. Guided by more than 150 teachers, industry mentors and PBS Hawai'i staff, students produced personal narratives, cultural profiles and issue-driven features that aired statewide and beyond.

HIKI NŌ continues to be a catalyst for student confidence, creativity, and storytelling – supported by dedicated teachers, mentors and community partners. Through collaborations with the Hawai'i Department of Education (HIDOE), STEMworks Hawai'i, and Mental Health America of Hawai'i, students explored mental health, innovation and resilience with purpose and heart.

Civic Dialogue That Matters

PBS Hawai'i served as a convening space for respectful, community-based dialogue. We produced 37 new episodes of **Insights on PBS Hawai'i**, covering pressing issues such as the home insurance crisis, agricultural crime, e-bike safety and the proper labeling of fish sold in retail outlets.

Five **KĀKOU: Hawai'i's Town Hall** forums brought together neighbors from across the islands to share perspectives and explore solutions in real time. Topics ranged from Alzheimer's disease to illegal fireworks, sports concussions and the evolving state of aloha. We strive to provide a platform where all voices are valued and heard, grounded in our belief that informed, civil conversation is essential to building a stronger Hawai'i.

Digital Innovation & Philanthropic Growth

In FY2025, digital innovation fueled continued growth. We proudly featured dozens of digital-exclusive projects, including the two-part reggae documentary *In Hawaiian Hands: The Story of Reggae in Hawai'i*.

Our digital-first content continued to expand. The third season of **What School You Went?**, our homegrown podcast, reached nearly a quarter-million downloads and remained in the top 10% of podcasts globally. **Alanui Mele** explored the foundation of Hawai'i's hip-hop scene through thoughtful video storytelling and artist interviews. **'ONO! Hawai'i's Food Culture**, highlighted local cuisine with engaging new segments on manapua, Spam musubi, butter mochi, saimin and laulau.

We also deepened our partnership with Spectrum, leveraging advanced viewer data to inform content strategy. Monthly collaborations with *Honolulu Magazine* allowed us to share stories with new audiences through a branded blog series, reinforcing our presence across traditional and digital platforms.

Infrastructure, Access & Advocacy

In June, we completed the KMEB Transmitter Replacement Project on Maui, an essential step toward maintaining broadcast access for underserved areas. Although FEMA's NGWS grant program was placed on hold twice, we chose to move forward with installation due to our careful planning and deep investment. This project reflects our broader commitment to statewide access and infrastructure integrity.

PBS Hawai'i remained grounded in its mission, reaffirming our commitment to transparency, sustainability and community-based decision-making. Public trust is our most valuable currency. For the 22nd consecutive year, PBS was ranked as America's most trusted institution. Here in Hawai'i, our commitment to integrity and aloha remains unwavering.

Federal Funding Advocacy & Resilience

In May, a presidential executive order sought to eliminate all federal funding for public media. PBS Hawai'i stood firm in its mission, releasing public statements that emphasized:

- Our long-term efforts to diversify funding sources,
- Our commitment to locally driven content decisions,
- And our unwavering dedication to public trust and media access.

While legislative actions advanced through Congress, we remained operationally sound and forward-thinking in our financial planning.

Looking Ahead

As we plan for FY2026, PBS Hawai'i is more focused than ever on building a future rooted in local relevance, access for all and meaningful storytelling.

PBS Hawai'i continues to serve as a trusted and respected source of news, culture and high-quality educational content. As a public television station, we are committed to upholding journalistic integrity and maintaining a free, independent media platform for our community. Nationally acclaimed programs such as *PBS News*, *NOVA*, *Nature*, *FRONTLINE*, *All Creatures Great and Small on Masterpiece* and *Antiques Roadshow*, along with beloved children's shows like *Sesame Street* and *Daniel Tiger's Neighborhood*, reinforce our vital role in informing, educating and enriching lives.

Our mission remains clear: to uplift, to inform and to connect Hawai'i's people through thoughtful, independent media.

On behalf of our Board of Directors and our dedicated staff, mahalo nui for your continued support and for your belief in the power of public media to shape a more informed, compassionate and united Hawai'i. With your partnership, we will continue to serve Hawai'i with aloha, purpose and trust.

With aloha and respect,



Ryan Kaipo Nobriga
Board Chair



Ron Mizutani
President and CEO



Our Mission

PBS Hawai'i advances learning and discovery through storytelling that profoundly touches lives.

Hawai'i's Television Station

PBS Hawai'i is the Hawaiian Islands' only locally owned statewide public television station and the only member of the nationally trusted Public Broadcasting Service.

We are led by a statewide Board of Directors and a locally based team of management and staff. We are the only federally licensed statewide educational broadcaster in the Islands.

33

Full-Time Staff

2

Part-Time Staff

7

Students

20

Unpaid Statewide Board Members

11

Statewide Community Advisory Board Members

101

Volunteers

283.5

Volunteer Hours

52

Volunteer Event Days

12,568

Citizen Donors

34

Business Sponsors

14

Grantors

Board of Directors

As of June 2025



Ryan Kaipo Nobriga
Chair



Siana Hunt
Secretary



Torrie Inouye
Treasurer



Beth Amaro



Adam Bauer



James E. Duffy Jr.



Joan Fujita



Jason H. Haruki



Brittany Heyd



**Daniel
Ikaika Ito**



**Cheryl Ka'uhane
Lupenui**



**Ashley Takitani
Leahey**



**Kevin
Matsunaga**



**Theresia
McMurdo**



Jeff Mikulina



Rick Nakashima



Ku'uhaku Park



**Harmonee
Williams**



**Hinalaimoana
Wong-Kalu**



Kūha'o Zane

Statewide Community Advisory Board

As of June 2025



Chuck Boller
Chair



Ku'ulani Auld



Elif Beall



Naomi Hazelton



Sterling Higa



Kainoa Horcajo



Shawn Malia
Kana'iaupuni, PhD



Kaimi Kaupiko



Lei Kihoi



**Kolby Akamu
Moser**



Marissa Sandblom

Management

As of June 2025



Ron Mizutani
President and CEO



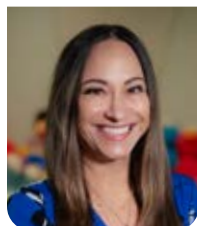
Karen Yamamoto
Senior Vice President
and CFO



Chuck Parker
Vice President
Content



Robert Pennybacker
Vice President
Business Development



Jody Shiroma
Vice President
Communications



**Christina Kanemoto
Sumida**
Vice President
Advancement



Daniel Odroniec
Chief Engineer



Brent Keane
Director
Learning Initiatives

Engineering

During the 2025 fiscal year, we made the following updates to the station:

KMEB Transmitter Replacement

We replaced the KMEB Maui transmitter at 'Ulupalakua Ranch on Maui, improving performance and efficiency. Residents of Maui and Hawai'i counties now receive reliable, free over-the-air PBS Hawai'i programming and emergency alerts during severe weather and natural disasters. This replacement resulted in electrical and air conditioning cost savings. It also gave us the ability to upgrade to ATSC 3.0.

Network and System Security Enhancements

We implemented multi-factor authentication for increased network security and protection of internal systems. For greater security, we have implemented multi-factor authentication to access our network.

Media and Server Infrastructure Upgrades

We upgraded the MediaGrid, our Ethernet-based shared storage system optimized for digital media workflows, improving reliability and performance. We also upgraded our KVM-over-IP switch, providing secure, remote access and control of local and remote servers.



HIKI NŌ

 PBS HAWAI'I

Season 16 of **HIKI NŌ on PBS Hawai'i** builds on the strong foundation of our partnerships with schools and communities, continuing to showcase authentic student voices. With expanded educational programs and fresh initiatives focused on climate change and sustainability, **HIKI NŌ** remains a trusted and inspiring resource for students, educators and the wider community.

Student Storytelling That Resonates

Season 16 of **HIKI NŌ on PBS Hawai'i** once again placed Hawai'i's youth at the center, showcasing stories that reflect the diversity, creativity and authenticity of student experiences across the islands. From reflections on gratitude and identity to tales of bodysurfing, poetry and cultural kuleana, these student-created segments were both deeply personal and powerfully resonant. A special episode dedicated to elementary storytellers revealed the promise of our youngest contributors, while the "Class of 2024" episodes offered heartfelt senior reflections on the lasting impact of the **HIKI NŌ** experience. Stories honoring local heroes, like a beloved Bishop Museum tour guide, and exploring topics such as endangered species and community history demonstrated that Hawai'i's next generation is both capable and committed to telling stories that matter.



HIKI NŌ teacher Trisha Roy and student Emma Roy film a special mother-daughter segment in the PBS Hawai'i studio.



HIKI NŌ students join staff and a mentor in the edit bay for a hands-on learning experience.

Strengthening Learning Through Story

HIKI NŌ continued to grow as a statewide learning platform by expanding classroom resources and professional development opportunities. In partnership with PBS LearningMedia, a total of 16 tutorials and lesson plans are now available to educators. These resources not only teach technical and narrative storytelling skills, but also use real student-produced stories to provide cross-curricular learning opportunities in areas like science, social studies, language arts and media literacy.

By using authentic, local content, the materials help students connect more deeply to the subject matter while supporting teachers in bringing HIKI NŌ into the classroom.

Throughout the season, students also had opportunities to learn directly from industry professionals. Filmmakers, journalists and other media experts served as guest mentors, offering feedback on student work, sharing insights into creative careers and reinforcing the real-world relevance of storytelling. These mentorship moments helped students grow in confidence, skill and purpose.

Planning is also underway for the first in-person HIKI NŌ Teachers Conference since 2019, a return to pre-pandemic tradition and a valuable opportunity for mentorship, connection and inspiration among educators.

Elevating Youth Voices Through Collaboration

Season 16 marked continued growth in HIKI NŌ's collaborative approach, deepening relationships with schools and expanding opportunities for student enrichment. In addition to ongoing partnerships with educators and organizations like Mental Health America of Hawai'i, whose annual Student Voice Awards highlighted stories of emotional resilience and empathy, HIKI NŌ staff engaged directly with students and teachers at events across the state.

At the Hawai'i STEM Conference and Shoots Summit Hawai'i, PBS Hawai'i team members led hands-on workshops, judged media competitions and connected with nearly 700 participants. These statewide events reinforced HIKI NŌ's role as a bridge between classroom learning and real-world experience, helping students see the broader possibilities that storytelling can unlock.

A Growing Community of Storytellers

This year also marked a major milestone with the launch of the HIKI NŌ Alumni Association. More than 300 former students and teachers received the first alumni newsletter, featuring a welcome message from former Director of Learning Initiatives Robert Pennybacker and highlights of alumni accomplishments. The network is already reconnecting mentors and graduates, offering inspiration and pathways for current and future students alike.

Meanwhile, filming is underway for the "Class of 2025" spotlight episodes, reinforcing how the HIKI NŌ experience continues to shape students' futures through hands-on learning, collaboration and critical thinking. Season 16 reaffirmed that the stories we tell today help build the storytellers and communities of tomorrow.



Former HIKI NŌ students now working in the PBS Hawai'i studio.



2024–2025 Participating Schools

Participating Schools	84
T = Title I Schools	42

O'ahu (47)

Āliamanu Middle School
 Alvah Scott Elementary School ^T
 Assets School
 Campbell High School
 Ewa Makai Middle School
 Farrington High School ^T
 Hawai'i Baptist Academy
 Hawaii Technology Academy Public
 Charter School
 Highlands Intermediate School
 Hongwanji Mission School
 Honouliuli Middle School
 Honowai Elementary School ^T
 Ho'okele Elementary School
 Kahuku High School ^T
 Kailua Intermediate School
 Kaimukī Middle School
 Kaiser High School
 Kalāheo High School
 Kalākaua Middle School ^T
 Kalani High School
 Kamaile Academy Public Charter
 School ^T
 Kamehameha Schools – Kapālama
 Kapolei High School
 Keolu Elementary ^T
 Mālama Honua Public Charter
 School ^T
 Mauka Lani Elementary School
 McKinley High School ^T
 Mid-Pacific Institute High School

Mid-Pacific Institute Middle School
 Mililani Middle School
 Moanalua High School
 Moanalua Middle School
 Niu Valley Middle School
 Pacific Buddhist Academy
 Pearl City High School
 Pearl City Highlands Elementary
 School ^T
 Punahou School
 Roosevelt High School
 Sacred Hearts Academy
 Waiāhole Elementary School ^T
 Wai'alae Elementary Public Charter
 School
 Wai'anae High School ^T
 Wai'anae Intermediate School ^T
 Waikiki Elementary School
 Waimanalo Elementary &
 Intermediate School ^T
 Waipahu High School ^T
 Waipahu Intermediate School ^T
 Washington Middle School ^T

Home School (1)

Raphael and Georgine Stark

Kaua'i County (7)

Chiefess Kamakahahei
 Middle School ^T
 Island School
 Kapa'a High School
 Kapa'a Middle School ^T
 Kaua'i High School
 Waimea High School ^T
 Wilcox Elementary School ^T

Maui County (12)

H.P. Baldwin High School ^T
 Hawaii Technology Academy
 Public Charter School – Lahaina
 Campus
 'Āao Intermediate School ^T

Kalama Intermediate School ^T
 Kamehameha Schools Maui
 High School and Middle School
 Kihei Elementary School ^T
 Lahaina Intermediate School ^T
 Lahainaluna High School ^T
 Maui High School
 Maui Waena Intermediate School ^T
 Moloka'i High School
 'O Hina I Ka Mālama ^T
 Pomaika'i Elementary School

Hawai'i Island (17)

Ernest Bowen de Silva Elementary
 School
 Hawai'i Technology Academy
 Kona Campus
 Hawai'i Preparatory Academy
 Hilo High School ^T
 Hilo Intermediate School ^T
 Honoka'a High & Intermediate
 School ^T
 Ka 'Umeke Kā'eo Public Charter
 School ^T
 Ka'ū High School
 & Pāhala Elementary School ^T
 Ke Kula 'O Nāwahīokalani'ōpu'u Iki
 Lab Public Charter School ^T
 Kea'au High School ^T
 Kea'au Middle School ^T
 Kealakehe High School ^T
 Konawaena High School ^T
 Kua O Ka Lā New Century Public
 Charter School – Hilo ^T
 Kua O Ka Lā New Century Public
 Charter School – Hipu'u Virtual
 Academy, Miloli'i ^T
 Pahoahā High and Intermediate
 School ^T
 Volcano School of Arts & Sciences
 Public Charter School ^T
 Waiākea High School

Local Programs

We are dedicated to creating original programs reflecting Hawai'i's diversity that viewers have come to appreciate and trust. These programs cover a wide variety of important community issues, aiming to build impartial understanding through distinct voices and representation, preserving our diverse ethnic and cultural backgrounds.

INSIGHTS on PBS Hawai'i

This weekly live one-hour public affairs program on most Thursdays throughout the year offered discussions on a variety of issues facing our community. Included were 20 episodes featuring candidates in election contests from across the state including for U.S. Senate, Hawai'i County Mayor, numerous races for State Senate and State House seats, races for council seats in three of the state's four counties and proposed amendments to county charters and the state constitution.

Other episodes offered discussions on: cell phones in schools; proposed changes to Hawai'i's self-defense law; caring for the state's older population or kūpuna; the state's lack of preparation for an increasingly aging society; a report listing Hawai'i as having the worst drivers in the country; a study that listed methamphetamine poisoning as the leading cause of drug overdoses among Hawai'i residents 50 and older; understanding menopause; whether the state is doing enough to revitalize and expand use of 'ōlelo Hawai'i or the native language of the islands; what state lawmakers



E-Bike Safety

are doing to address Hawai'i's home insurance crisis; an explanation of new rules giving the state department of agriculture more power to fight invasive species; government reform bills; agriculture-related crime including theft, vandalism and violence; the challenge of finding a suitable location for a new landfill on O'ahu; E-bike safety; how to spot and avoid scams in the world of artificial intelligence; preparing for hurricane and fire season; an update on the state's effort to replace an outdated jail on O'ahu that has already cost upwards of \$1 billion; an examination of the state's job market in light of federal layoffs and when and how to plan for retirement.

Home is Here

This monthly 30-minute program includes stories about life in Hawai'i from all islands.

In fiscal year 2025 these included: the history of Foster Botanical Garden in Honolulu with rarely seen images of the family that once owned the property; a story about the Hawaii Quilt Guild; artists Shar Tui'asoa and Kenyatta Kelechi; a profile of Ann Yoshida who became a competitive paddler following an accident that left her paralyzed; the unique beekeeping certificate program at the University of Hawai'i at Hilo; the husband-wife team that created Candy Art Hawai'i, a company that uses a traditional Japanese



Hawaii Lion Dance Association, Talk Story Bookstore, Hawaiian Pie Company

candy-making technique; the Asato family that makes sherbert-type products featuring favorite local flavors like Green River and Spam and eggs; a profile of Hanohano Naehu, an award-winning hip-hop artist from Moloka'i; a profile of Esther Nowell, who was still teaching art at 104 years of age; the story of Kāko'o 'Ōiwi, a non-profit poi factory that teaches youth indigenous Hawaiian practices; the combined effort of neighbors in Waikele, Central O'ahu who decorate the entire block with Christmas lights annually; the only bookstore on Kaua'i; the history of the family-run Hawaiian Pie Company, which began in Kapa'au on the Big Island during the sugar plantation days; the mission of the Hawaii Lion Dance Association; an in-depth look at the success of the Lanai Cat Sanctuary, which houses hundreds of feral cats; the Keiki Zoo in Honolulu; the flying saucers, a homemade dish served at Bon Dances in Hanapēpē on Kaua'i; a specialty antiques store in Kapahulu, Honolulu that sells, among other things, vintage aloha shirts; a non-profit called Never Quit Dreaming that provides opportunities to special needs children to participate in sports like baseball and soccer; a look at the lightning-fast competitions of the Hawaii Cubing Community; the Kimokeo Foundation on Maui which preserves Hawaiian culture through language and historical practices; a profile of the late businessman



Jerry Santos at Halekulani's House Without A Key

Clarence T.C. Ching, whose foundation donates to numerous organizations across the state, including PBS Hawai'i; a profile on a boxing club in Wai'anae, West O'ahu that, in addition to boxing skills, teaches its youthful students valuable life skills and how to be contributing members of the community; a story about Little Plumeria Farms, a company that was born out of the effort to get rid of a pesky plant; and the touching story of the Healing Through Art program for cancer and other patients at The Queen's Medical Center.

Nā Mele

In fiscal-year 2025 we featured O'ahu native Kala'e Parish who sings local country music and now makes his home in Waimea on the Big Island; Walea, a three-person band featuring a husband-wife team whose original music harks back to the days of *Hawaii Calls* and the early days of tourism in Waikiki; a pledge show showcasing 25 years of Hawai'i's home-grown musical talent on *Nā Mele*; a pledge show featuring the musical genius of long-time entertainer and composer **Jerry Santos at Halekulani's House Without A Key**. We also recorded contemporary artist Kala'e Camarillo, which will premiere in September of 2025.

KĀKOU: Hawai'i's Town Hall

PBS Hawai'i presented five live 90-minute episodes of **KĀKOU: Hawai'i's Town Hall**. The programs featured panels with varied voices about the topic at hand as well as questions sent in by viewers via phone, email and social media.

The first episode was called ***First-Time Voters***. This show featured young people from across the state who were voting for the first time since becoming old enough to cast ballots. They shared details on why they felt it was important to vote, particularly in a presidential election year. Some of the panelists has just graduated from high school while others were seniors in high school. Some had cast their first ballots in the primary election held earlier in the month while others were looking forward to casting their first ballots in the upcoming general election.

The second episode was titled ***The State of Aloha***. This program featured panelists discussing whether Hawai'i was losing its famed aloha spirit attitude. Factors discussed included the changing demographic of the state, with local residents being forced out by the high cost of living and being replaced by others who did not grow up with the same frame of mind. Also cited was the increase in stress levels experienced by residents who are working more than one job and still cannot afford to buy a home.

Episode three was called ***The Challenges of Alzheimer's***. This program lived up to its title with a discussion about the challenges of this disease that affects so many families in Hawai'i. The panel included medical professionals, representatives of caregiver associations, personal caregivers, community organizations and a doctor who specializes in new approaches to delay onset of the disease.

The fourth episode was titled ***Sports Concussions***. In this show, we talked about the prevalence of

concussions particularly among young people and how concussions can happen in multiple sports like soccer, gymnastics, basketball, cheerleading etc., and not just high contact sports like football and boxing. We explained the protocols that already exist in state law to protect young athletes when they are hurt and a concussion injury is suspected. The show talked about prevention through the use of the correct equipment and the dangers of what can happen when people suffer multiple concussions or if nothing is done when one occurs.

Episode five was called ***Illegal Fireworks***. This program focused on the exponential growth in the use of illegal fireworks, primarily aerial fireworks, across the state but particularly on O'ahu, where six people, including a 3-year-old boy, died in a massive detonation of illegal aerals at a home in 'Aliamanu on the edge of Honolulu a few months earlier on New Year's Eve. Another person died in a separate incident the same night. The panel included local law enforcement representatives, lawmakers, first responders including police, fire department and ambulance services, medical professionals and a person to address the notion that the illegal activity is a cultural practice.



Illegal Fireworks

PBS Hawai'i Presents

PBS Hawai'i produced two feature-length films this year and showcased 11 independent full-length films.

Infected Earth is produced by a filmmaker in Australia and hosted by an emergency room doctor in Honolulu. It shed light on the numerous negative effects on the environment and the people of Australia from a changing climate. This includes coral bleaching along the Great Barrier Reef, wildfires that destroyed entire communities, coastal erosion and extreme drought.

Songs of Love From Hawai'i is a creatively-directed film by Jinyoung Lee Won about Korean immigration to Hawai'i. Jinyoung weaves animation, historical photos and interviews with music performed by local and classical artists in outdoor settings across the state.

Ah Quon McElrath: The Struggle Never Ends is a profile of a longtime champion of workers' rights in Hawai'i and her efforts for fair, living wages from companies that had exploited workers for decades.

When Silence Becomes the Song is a first time film by a college student who was born and raised

on the island of Kaua'i. The film was a first-hand account of the effort by the Kaua'i Forest Bird Recovery Project to document the number of surviving native birds in the forests of Kaua'i, collect birds in populations that are so small they may soon go extinct and breed them in captivity to save the species.

Vanishing Voices: Saving Our Native Hawaiian Forest Birds is a film about the effort on Maui to control the spread of invasive mosquitoes that carry deadly avian diseases that are pushing native Hawaiian bird species to the brink of extinction. This was the first feature-length film by the filmmaker.

Kai Piha: Diamond Head Makai shares the history of the beaches, surf breaks and shorefront areas around Diamond Head State Monument dating back to the ancient Hawaiians who first settled the islands.

Baseball Behind Barbed Wire documents the story of Japanese American citizens who organized baseball teams and competitions despite being imprisoned during World War II by their own country.

Hōkūle'a: Star of Gladness is a film that was produced 50 years ago, and most likely not seen since, about



In Hawaiian Hands: The Story of Reggae in Hawai'i



Pu'uwai Haokila: The Story of How Hawai'i Shaped Hawaiian Music

the building of and the historic launch of Hōkūleʻa, a canoe modeled after ancient Polynesian voyaging canoes crafted by the original inhabitants of the Hawaiian Islands.

Reel Wāhine of Hawaiʻi 5 is the fifth installment of a series of films by the non-profit Hawaiʻi Women in Filmmaking that profiles women involved in making films in Hawaiʻi.

Concerto for Slack Key Guitar and Orchestra: Mālama ʻĀina is a film about Maui-born slack key artist Jeff Peterson, who composed a concerto and then performed it with a symphony orchestra in North Carolina.

Persevere is a film about the effort by a Hawaiʻi resident to find out what happened to an uncle who had moved to Okinawa just before the outbreak of World War II to help with a family farm and was conscripted into the Japanese Army for the battle of Okinawa.

In Hawaiian Hands: The Story of Reggae in Hawaiʻi, Part I: Roots of Creation and Part II: Jawaii a new two-part PBS Hawaiʻi documentary. Made available exclusively online, the series tracked the history of reggae music in Hawaiʻi from its introduction in the 1970s to the adaptations by local artists in the '80s and '90s into what was called Jawaiian music.

Puʻuwai Haokila: The Story of How Hawaiʻi Shaped Modern Music documents the musical impact Native Hawaiian musicians had on music history in the country and the world despite cultural and political upheaval at home.

PBS Hawaiʻi Presents Shorts

PBS Hawaiʻi added 11 short films in fiscal 2025 to its online options for viewers. Shorts are films that do not fit into a usual broadcast-length timeslot. Eight of the 11 films were within a project called



Dear Aloha

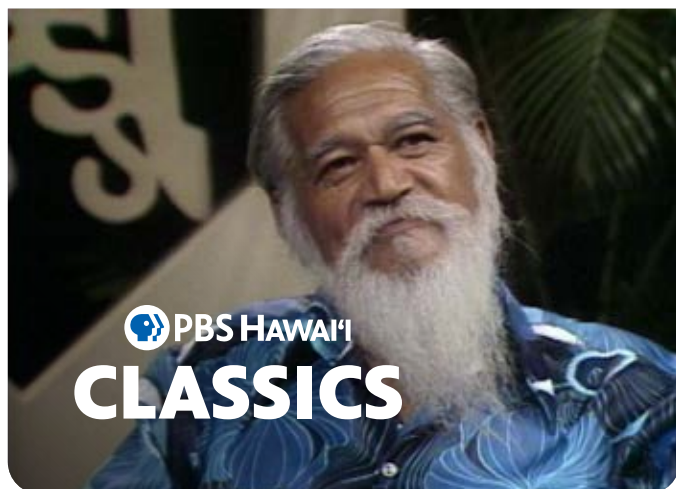
Homegrown: A Part of/Apart From featuring works by emerging filmmakers living in Hawaiʻi, U.S. Territories and their diasporic communities.

AMEFIL (Amy) is a film about 80-year-old Hawaiʻi civil rights advocate and Filipina activist Amy Agbayani, who has championed diversity, equity and inclusion in the classroom and broader community.

Dear Aloha (Homegrown) follows Native Hawaiians living in the Pacific Northwest on the U.S. continent as they reflect on how the cultural meaning of aloha sustains them over distance as they long for their homeland.

Not a U.S. Citizen (Homegrown) explores the unique legal status of the people of American Samoa who live in a U.S. territory but are not U.S. citizens and retain indigenous ownership of their land.

Waters of Puʻuloa (Homegrown) documents how sacred waters in the ahupuaʻa of Puʻuloa, which included Pearl Harbor Naval Base, were transformed from lush, life-giving qualities managed by Native Hawaiians to a polluted, industrial zone following the annexation of Hawaiʻi by the United States.



George Ho'okano and the Royal Hawaiian Band

We Are Taino (Homegrown) follows a Taino woman from the U.S. Virgin Islands as she endeavors to reclaim her Taino heritage and become the first woman kasike (chief) of the Taino tribe.

Chamoru: A Lost Language (Homegrown) follows filmmaker Brian Muna as he seeks to reconnect with Chamoru, the native language of Guam and the elders in his family.

Casa Laurel (Homegrown) focuses on elders in the community of Calle Loíza, San Juan, Puerto Rico as the neighborhood around them quickly transforms under the forces of gentrification.

What Storms Taught Us (Homegrown) examines the state of public schools in the U.S. Virgin Islands seven years after back-to-back category five hurricanes ravaged the islands.

Escambrón Playa (Homegrown) profiles a group of activists fighting to protect the coastline of Escambrón Beach in Puerto Rico from overdevelopment.

Kinai 'Eha follows the transformative journey of Jaben, who works his way through the lingering effects of childhood trauma and incarceration within the Kinai 'Eha program, an initiative that provides



Caleb Croswell reads "The Count of Monte Cristo"

alternative education, personal empowerment and a deeper understanding of Hawaiian cultural identity.

The Kona Beekeeper Legacy Project shares the little known but vital role of the beekeeping industry on the Kona side of the Big Island.

PBS Hawai'i Classics

These vintage programs from the PBS Hawai'i archives run most Wednesdays at 7:30 pm.

GET CAUGHT READING

PBS Hawai'i continues to produce **GET CAUGHT READING** spots that range from 30 seconds to 90 seconds and feature people from all walks of life reading a passage from a favorite book or poem. Animation of the spoken words accompany the read to encourage reading for all ages. This year we produced eight new **GET CAUGHT READING** videos.

What School You Went?

We entered our third year of producing **What School You Went?**, our weekly audio podcast. Exploring traditions and stories that make up the modern-day culture of Hawai'i, we released 42 podcasts, of which 39 were new episodes.

In addition to the audio component, in FY2025, we continued releasing video episodes weekly on the PBS Hawai'i YouTube channel. Topics included pigeon-racing, haunted locations around the state, an organization that perpetuates the Hawaiian culture, a teenage entrepreneur, local Hawai'i traditions like sashimi on New Year's Day and more.

Alanui Mele: Hawai'i Hip-Hop History

In January 2024, we launched **Alanui Mele: Hawai'i Hip-Hop History**, a podcast that explores the rich tapestry of Hawai'i's hip-hop culture, moving from an audio-only format to video in FY2025.

Over the year, we produced 10 new episodes that included candid interviews with prolific individuals in Hawai'i's hip-hop community. Featured guests included deejays who helped pave the way for Hawai'i's hip-hop musicians, an entrepreneur who helped start a homegrown radio station, the founder of a hip-hop dance crew, emcees, a street artist and musicians.

'ONO! Hawai'i's Food Culture

Premiering in January 2025, our monthly digital series **'ONO! Hawai'i's Food Culture** released five episodes exploring some of Hawai'i's iconic local comfort foods. The series covered five key dishes central to the islands' culinary heritage:

- **Manapua:** Hawai'i's version of Chinese bao with savory fillings
- **Butter mochi:** a sweet, chewy dessert combining coconut milk and butter
- **Spam musubi:** a fusion snack blending Chinese, Japanese, Filipino and American influences
- **Saimin:** Hawai'i's premier noodle dish garnished with local-style ingredients
- **Laulau:** a traditional Hawaiian dish made with pork, lū'au leaves and butterfish



A Young Man with a Purpose with Sterling Higa



ZSHY Hawai'i's First Female Graffiti Writer



We Can't Get Enough of Butter Mochi

Connecting and Engaging with Our Community

Engaging with our community is critical to connecting, educating and inspiring audiences. In FY2025, we strengthened our connection to community through meaningful interactions with donors, keiki, kūpuna and the general public. These touchpoints helped us share the work we do and show the impact of public media in Hawai‘i.



Virtual Screenings

We hosted nine virtual screenings, broadening our audience beyond Hawai‘i to the U.S. mainland and internationally. Each screening included panel discussions with filmmakers and documentary subjects, encouraging in-depth engagement.

Ten independent documentaries and two original feature films included diverse themes like:

- **Environment & Climate:** Focused on climate change impacts in Hawai‘i and conservation efforts for native species.
- **Cultural Identity:** Explored immigration, music and the rich cultural heritage of Hawai‘i’s communities.
- **Social Justice:** Addressed historical injustices and local advocacy for equity and workers’ rights.
- **Personal Stories:** Highlighted individual resilience and community ties through personal narratives.

Alanui Mele Podcast

The **Alanui Mele: Hawai‘i Hip-Hop History** podcast released 23 episodes across two seasons, exploring Hawai‘i’s evolving hip-hop culture. Featured guests included DJ Skinny Guy, Maui’s first DJ in international competitions and Sudden Rush, a pioneering hip-hop group. Other highlights were interviews with the “super producer” shaping local music, Hawai‘i’s first female street artist and key figures in Hawai‘i’s independent music scene, including the co-owner of Jelly’s and Radio Free Hawai‘i. The podcast also celebrated the legacy of DJ Leanskee, a Hip-Hop Hall of Fame inductee, and reflected on the release of Hawai‘i’s first rap CD in 1991.

‘ONO! Hawai‘i’s Food Culture Digital Content

Our ‘ONO! Hawai‘i’s Food Culture stories, with tasty topics like manapua, butter mochi, Spam musubi, saimin and laulau, shared the history, preparation and cultural importance of each dish. Deepening listeners’ appreciation for Hawai‘i’s food culture, videos garnered 26,000 to 62,000 views per episode on the PBS Hawai‘i YouTube channel.

Donor Engagement

To cultivate strong relationships with our donors, we offered experiences that highlighted the effects of their support. A notable event was a look behind the scenes of our new **Nā Mele** concert production, featuring Jerry Santos, hosted at the iconic Halekulani's House Without A Key. This intimate gathering allowed donors to connect personally with staff, musicians and other performers while deepening their connection to our programming.

We also launched our inaugural PBS Hawai'i Open House, inviting donors and community members to explore our studios, learn about our broadcast and digital content initiatives, and to engage directly with our staff on station goals and upcoming projects. This interactive event reinforced the importance of donor contributions and offered insights into the future direction of the station.

Keiki and 'Ohana

Our commitment to nurturing young minds through media was evident in a range of activities centered on keiki and their families. We hosted our Annual Keiki Club Trunk O' Treat, providing a safe, fun and interactive experience on our station grounds. Additionally, we extended our reach into the community by participating in the Candy Crawl at Pearlridge Center, connecting with more than 5,000 keiki and 'ohana through activities and outreach.

In our efforts to promote literacy, we traveled to Kaua'i for the Parent & Child Fair, connecting with more than 300 children about the joy and importance of reading, complemented by the distribution of *Curious George* books. Further supporting literacy initiatives, PBS Hawai'i staff visited three local elementary schools during Read Across America to conduct book readings.

General Public

PBS Hawai'i continued its environmental education efforts through participation in two Keiki Storytime events at the Kalihi-Pālana Public Library on O'ahu. These sessions were part of PBS Hawai'i's climate change initiative, **Mauka to Makai: Our Kuleana**. The effort focused on the importance of recycling and ocean conservation, promoting environmental care among youth and families.

At the 2024 Wahine Forum, we hosted an interactive booth where attendees could take photos with their favorite PBS KIDS characters. This engagement provided a fun and interactive platform to share information about our work and inspire community support for public media across Hawai'i.



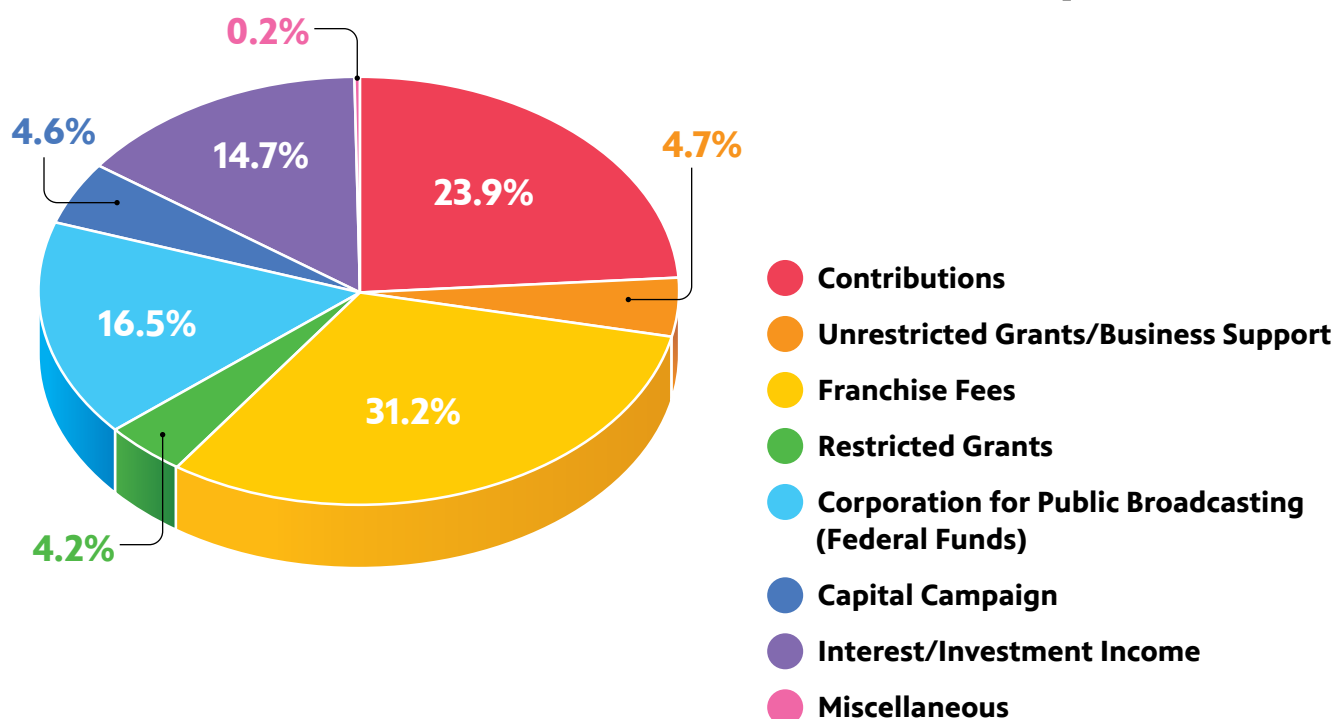
Kaua'i Parent & Child Fair



Kalihi-Pālana Public Library

Revenue Report

HAWAI'I PUBLIC TELEVISION FOUNDATION dba PBS Hawai'i Total Revenues by Source



Contributions	2,589,373
Unrestricted Grants/Business Support	505,848
Franchise Fees	3,377,028
Restricted Grants	457,837
Corporation for Public Broadcasting (Federal Funds)	1,790,707
Capital Campaign	500,000
Interest/Investment Income	1,594,518
Miscellaneous	19,002
Total Revenues	\$ 10,834,313

Our Community, Our Support

We are grateful to our grantors and sponsors for their continued support in helping us advance our mission. Thanks to these individuals and organizations, we have been able to enhance our educational programming and outreach efforts, our community engagement and involvement and to foster a culture of collaboration and innovation.

Grantors FY25

Chung Kun Ai Foundation
Bank of Hawai'i Foundation
Corporation for Public
Broadcasting
Hawai'i Schools Digital
Media Program
George Mason Fund of the
Hawai'i Community
Foundation
Nuestro Futuro Foundation
PBS Climate, Nature
& Our Planet
Saltchuk Hawai'i Giving
Stupski Foundation
The Dods Foundation
The Freeman Foundation
The Kosasa Foundation
Tradewind Group Foundation
G.N. Wilcox Trust

Sponsors FY25

ALTRES Foundation
Dr. Belinda Aquino
Atsuhiko and Ina Goodwin
Tateuchi Foundation
Altas Insurance Agency
Bank of Hawai'i Foundation
Bendon Family Foundation
Cades Foundation
Cades Schutte LLP
Carlsmith Ball LLP
Cronin Fried Sekiya Kekina
& Fairbanks
First Hawaiian Bank
First Insurance Company
of Hawaii
Hawaii Dental Service
Hawaii Food Industry Association
Hawai'i Gas
Hawai'i Leadership Forum

Hawaiian Airlines
HEI
John R. Halligan Charitable Fund
Kamehameha Schools
Matson
Parker Ranch
Pacific Diamond
PASHA HAWAII
Riggs Distributing, Inc.
Ruby Tuesday Hawaii
Servco
Spectrum
Stupski Foundation
The Kosasa Foundation
Ulupono Initiative
Vibe Creative Marketing
Young Brothers, LLC
Zippy's Restaurants

PBS Hawai'i Programming

Culture and Art

37th Hispanic Heritage Awards
 89th Annual Anisfield-Wolf Book Awards
 A Culture Built with Wood
 Actually, Iconic: Richard Estes
 Amen! Music of the Black Church
 Antiques Roadshow (series)
 Antiques Roadshow Recut (series)
 Art 21: Art in the Twenty-First Century (series)
 Art Happens Here with John Lithgow
 Begin Japanology (series)
 City of Songs (series)
 Confluence (series)
 Craft in America (series)
 Design X Stories (series)
 Dig More Japan (series)
 Grand Sumo Highlights (series)
 Icon: Music Through the Lens (series)
 Islamic Art: Mirror of the Invisible World
 Japanology Plus (series)
 Jazz Music Awards
 Kabuki Kool (series)
 Leonardo Da Vinci (series)
 Roots of Comedy with Jesus Trejo (series)
 Rose O'Neill: An Artful Life
 Secrets of Sacred Architecture
 Sominsai: The End of a 1,000-Year-Old Festival
 Sumopedia (series)
 The Great American Recipe (series)
 The Magic of Mazza
 To Feel the Earth and Touch the Sky
 Ukiyoe Edo-Life (series)
 Wes Bound: The Genius of Wes Montgomery
 Wham Re-Bop-Boom-Bam: The Swing Jazz of
 Eddie Durham
 Yellowstone Symphony



Craft in America



All Creatures Great and Small on Masterpiece

Drama

All Creatures Great and Small on Masterpiece (series)
 Atlantic Crossing on Masterpiece (series)
 Before We Die (series)
 Call the Midwife (series)
 Cobra (series)
 Funny Woman (series)
 Grantchester on Masterpiece (series)
 Hotel Portofino (series)
 Howards End on Masterpiece (series)
 Magpie Murders on Masterpiece (series)
 Marie Antoinette (series)
 Marlow Murder Club on Masterpiece (series)
 Miss Austen on Masterpiece (series)
 Miss Scarlet on Masterpiece (series)
 Moonflower Murders on Masterpiece (series)

Mr Bates vs The Post Office on Masterpiece (series)
 Patience (series)
 Professor T (series)
 RFDS: Royal Flying Doctor Service (series)
 Ridley (series)
 Sherlock on Masterpiece (series)
 The Marlow Murder Club on Masterpiece (series)
 Van Der Valk on Masterpiece (series)
 Vienna Blood (series)
 Wolf Hall on Masterpiece (series)
 Wolf Hall: The Mirror and the Light on
 Masterpiece (series)

Documentary

10 Days in Watts (series)
 A Cat's-Eye View of Japan
 A Thousand Pebbles on the Ground
 Agatha Christie: Lucy Worsley on the Mystery
 Queen (series)
 Agatha Christie's England
 Always Looking: Titus Brooks Heagins
 Amache: An American Injustice
 American Experience (series)
 American Justice on Trial: People V. Newton
 American Masters (series)
 And Knowledge to Keep Us
 Art + Medicine: Disability, Culture and Creativity
 Art and Pep
 ASD Band: The Movie
 Awadagin Pratt: Black in America
 Beyond Debate: A Revolution in Education
 Beyond the Bolex
 Birth of the Endless Summer
 Birthright
 Black Fiddlers
 Black Fire Documentary
 Black Sox Scandal: American Stories
 Bridging Divides: Sharing Heartbeats
 Charley Pride: I'm Just Me
 Chopin Saved My Life
 Clint Eastwood: The Last Legend
 Clive Davis: The Soundtrack of Our Lives
 Composer: Amy Beach

Congress
 Corridors of Power
 Deadlock: An Election Story
 Disco: Soundtrack of a Revolution (series)
 Dr. Eddie Henderson: Uncommon Genius
 Dreams of Glory: The World of Women's Sumo
 Eliades Ochoa: From Cuba to the World
 Elvis and the USS Arizona
 Eva's Promise
 Facing the Laughter: Minnie Pearl
 Finding Edna Lewis
 Finding Fate
 Finding Fellowship
 Finding Her Beat
 From Fear to Hope: The HIV and Aids Journey
 Fuzz
 Genius by Stephen Hawking (series)
 George H. White: Searching for Freedom
 Ghost Mountain: The Second Killing Fields of Cambodia
 Gods of Tennis (series)
 Graceball: The Story of Bobby Richardson
 Groundbreakers
 Hitchcock Confidential
 Homecoming: Sgt. Hamilton's Long Journey
 Hometown Stories (series)
 Horatio's Drive: America's First Road Trip
 House Music: A Cultural Revolution
 I Am She: The Matriarch of America



Finding Her Beat

Independent Lens (series)
 Inside the Mind of Agatha Christie
 Irma: My Life in Music
 Jack Has a Plan
 Jacqueline Du Pre: Genius and Tragedy
 John Lewis: Get in the Way
 Julie Andrews Forever
 Ken Burns: One Nation, Many Stories
 Ken Burns: The Civil War
 Lives Well Lived
 Love After War: Saving Love, Saving Lives
 Lucy Worsley Investigates (series)
 Lucy Worsley's Holmes vs Doyle (series)
 Lucy Worsley's Royal Myths & Secrets (series)
 Lucy Worsley's Royal Palace Secrets
 Margaret: The Rebel Princess (series)
 Marie Antoinette: Beyond the Portrait
 Mel Brooks: The Genius Entertainer
 Meredith Willson: America's Music Man
 Miles, Morale and Memories: Bob Hope and
 World War
 Momentum
 Mustangs: America's Wild Horses
 My Grandparents' War (series)
 Native Ball: Legacy of a Trailblazer
 Native Horse
 Never Drop the Ball
 Olympic Pride, American Prejudice
 Our American Family: The Furutas
 Outrage of Danny Sotomayor
 Paul Laurence Dunbar: Beyond the Mask
 Photographic Justice: The Corky Lee Story
 Playing Like a Girl: The House That Rob Built
 POV (series)
 POV Shorts (series)
 Real Story of Mr Bates vs The Post Office
 Resistance: They Fought Back
 Rise of the Bolsonaros
 Roar: The Story of the Southern Columbia
 Football
 Searching for the Standing Boy of Nagasaki
 Secret Song
 See Memory

Shaking It Up: The Life and Times of
 Liz Carpenter
 Shelter Me (series)
 Shift: The Ragbrai Documentary
 Singing Our Way to Freedom
 Single-Use Planet
 Sky Blossom: Diaries of the Next Greatest
 Generation
 Skydiving Over Sixty
 The Calling: A Medical School Journey
 The Class (series)
 The Electric Indian
 Thirst for Power
 Through Our Eyes (series)
 To Be Takei
 Touching the Sound
 Unconditional: Healing Hidden Wounds
 Unearthing Ogawa
 Valor and Memory
 VOCES (series)
 VOCES American Historia: The Untold History of
 Latinos (series)
 Wade in the Water: A Journey Into Black Surfing
 and Aquatic Culture
 Water for Life
 Wine, Women & Dementia
 Wisdom Keepers
 Your Serve or Mine?



Mustangs: America's Wild Horses



Odysseus Returns



Carl the Collector

History and Geography

A Long March
 Ancient Invisible Cities (series)
 Ancient Skies (series)
 Boston (R)Evolution
 Eagles of Mercy
 Enduring Democracy: The Monterey Petition
 Eyes of the World: From D-Day to VE Day
 Finding Your Roots (series)
 First Peoples (series)
 George Washington Carver: An Uncommon Life
 Great Migrations: A People on the Move (series)
 Inside the Court of Henry VIII
 Islands of Wonder (series)
 Journey to America: with Newt and Callista Gingrich
 Julius Caesar: The Making of a Dictator (series)
 Ken Burns: The National Parks
 Kingdoms of the Sky (series)
 Life From Above (series)
 Lifeline: Pearl Harbor's Unknown Hero
 Nazi Mega Weapons (series)
 Odysseus Returns
 Peleliu: WWII's Most Well-Preserved Battlefield
 Queen Elizabeth's Secret Agents
 Simon Schama: The Holocaust, 80 Years On
 The Statue of Liberty
 Thomas Jefferson (series)
 Timeless Patriotism: Guam and World War II
 Victoria & Albert: The Wedding (series)
 Village of Death: Oradour-Sur-Glane 1944

Kids

Acoustic Rooster and His Barnyard Band (special)
 Alma's Way (daily)
 Arthur (daily)
 Brambletown (special)
 Carl the Collector (daily)
 Clifford the Big Red Dog (daily)
 Curious George (daily)
 Cyberchase (weekly)
 Daniel Tiger's Neighborhood (daily)
 Dinosaur Train (daily)
 Donkey Hodie (daily)
 Elinor Wonders Why (daily)
 Hero Elementary (daily)
 Lyla in the Loop (daily)
 Martha Speaks (weekly)
 Mister Rogers' Neighborhood (weekly)
 Molly of Denali (daily)
 Nature Cat (daily)
 Odd Squad (daily)
 Pinkalicious & Peterrific (daily)
 Ready Jet Go! (daily)
 Rosie's Rules (daily)
 Sesame Street (daily)
 Super Why! (weekly)
 The Cat in the Hat Knows a Lot About That! (weekly)
 Wild Kratts (daily)
 WordGirl (weekly)
 Work It Out Wombats! (daily)
 Xavier Riddle and the Secret Museum (daily)



Songs of Love From Hawai'i



Persevere

Local and Regional

Ah Quon Mcelrath: The Struggle Never Ends
 Baseball Behind Barbed Wire
 Canefield Songs: Holehole Bushi
 Concerto for Slack Key Guitar & Orchestra:
 Mālama 'Aina
 Dear Thalia
 Family Ingredients: The Pilot
 Finding Kukan
 Hawaiiana
 HIKI NŌ (series)
 Hokule'a: Star of Gladness
 Home is Here (series)
 Infected Earth
 INSIGHTS on PBS Hawai'i (series)
 Jeri
 Kai Piha: Diamond Head Makai
 Kai Piha: Ka Ahele Ma Waikiki
 Kai Piha: Na Loko I'a
 KĀKOU: Hawai'i's Town Hall (series)
 Keeper of the Bay
 Li'a: The Legacy of a Hawaiian Man
 Listen to the Forest
 Luther Kahekili Makekau: A One Kine Hawaiian Man
 Nā Mele (series)
 Ohta-San: Virtuosity and Legacy
 Pacific Heartbeat (series)
 PBS Hawai'i Classics (series)
 Persevere
 Proof of Loyalty: Kazuo Yamane and the Nisei
 Soldiers of Hawai'i

Pu'uwai Haokila: The Story of How Hawai'i Shaped
 Modern Music
 Quietest Place on Earth
 Reel Wāhine of Hawai'i 5
 Removed by Force: The Eviction of Hawai'i's
 Japanese Americans During WWII
 Scaling Up: Hawai'i's Food Future
 School Stories: Ke'elikōlani & Sustainability
 Shinmachi: Stronger Than a Tsunami
 Songs of Joy: A PBS Hawai'i Holiday Celebration
 Songs of Love From Hawai'i
 The Adventures of Super CW
 The Hawaiian Room
 The Queen's Influence: The Vanishing Culture
 of Hiko in Tonga
 This is Kohala
 Those Who Came Before: The Musical Journey
 of Eddie Kamae
 Under a Jarvis Moon
 Vanishing Voices: Saving Our Hawaiian Forest Birds
 When Silence Becomes the Song
 Words, Earth & Aloha: The Source of Hawaiian Music

News and Public Affairs

After Action (series)
 Aging in America: Survive Or Thrive
 Aging Matters
 Amanpour and Company (series)
 Asia Insight (series)
 BBC News (series)
 Breaking the Deadlock

Caregiving
 Crossroads: A Conversation with America
 Deeper Look (series)
 Dementia and Living Well
 Direct Talk (series)
 Firing Line with Margaret Hoover (series)
 FRONTLINE (series)
 Going Your Way
 History with David Rubenstein (series)
 Inauguration of Donald J. Trump:
 A PBS News Special Report
 Laura Flanders & Friends (series)
 Live from the LBJ Library with Mark Updegrove (series)
 M Factor: Shredding the Silence on Menopause
 Newline in Depth (series)
 NHK Newline (series)
 PBS News Hour (series)
 PBS News Special: CBS News Vice Presidential Debate
 PBS News Special: Democratic National
 Convention (series)
 PBS News Special: Republican National
 Convention (series)
 PBS News Special: The ABC News Presidential Debate
 PBS News Special: CNN Presidential Debate
 PBS News Weekend (series)
 President Donald Trump: Address to Congress,
 a PBS News Special Report
 Presidential Address: A PBS News Special Report
 Remembering President Jimmy Carter,
 a PBS News Special



PBS News Hour

Run, Hide, Fight: Growing Up Under the Gun
 Tell Me More with Kelly Corrigan (series)
 To the Contrary with Bonnie Erbe (series)
 Today's Close-Up (series)
 VOCES Latino Vote 2024
 Washington Week with the Atlantic (series)

Performance

A Capitol Fourth
 All New Rock, Pop and Doo Wop
 American Rhapsody with the Ohio Valley Symphony
 Anacostia Delta: The Legacy of DC's Telemasters
 Austin City Limits (series)
 Bee Gees: In Our Own Time
 Beethoven's Missa Solemnis in the Texas Panhandle
 Bruce Springsteen's Nebraska
 Carole King & James Taylor: Just Call Out My Name
 Celine Dion: Taking Chances World Tour, The Concert
 Chautauqua at 150: Wynton Marsalis' All Rise
 Chicago & Friends: Live at 55
 Christmas in New England
 Christmas with Sir John Rutter at Preston Hollow
 Classic Christmas with the Bach Festival Society
 Coldplay: Live in São Paulo
 Crane Candlelight Concert
 Discover Saint-Saëns' "Organ" Symphony
 Earth, Wind & Fire: iHeart Radio Live
 Elton John & Bernie Taupin: The Library of Congress
 Gershwin Prize
 Elvis Presley: '68 Comeback Special
 Folk Americana Roots Hall of Fame: Inaugural
 Induction and Concert
 Gospel Live! Presented by Henry Louis Gates Jr.
 Great Performances (series)
 Great Performances at the Met (series)
 Holidays at Murray State
 Hope College Christmas Vespers
 Hymn for Peace: The Ukrainian Freedom Orchestra
 Performs Beethoven's Ninth Symphony
 International Jazz Day From Morocco
 Joy: Christmas with the Tabernacle Choir
 Let Your Heart be Light: Christmas in the Adirondacks
 Marley Brothers: The Legacy Concert



Great Performances



Big Cats 24/7

Musicians Hall of Fame Induction Ceremony and Concert

My Music with Rhiannon Giddens (series)
 Navidad: A Concordia Christmas
 New Kids on the Block: iHeart Radio Live
 Next at the Kennedy Center (series)
 Pictures at An Exhibition
 Recorded Live at Analog (series)
 Revival 69: The Concert That Rocked the World
 Rolling Stones: Grrr Live!
 Salute to Service: A Veterans Day Celebration
 Simon & Garfunkel: The Concert in Central Park
 Sting: Live at the Olympia Paris
 Symphony Celebration: The Blind Boys of Alabama
 Terence Blanchard in Dallas
 The National Memorial Day Concert
 The Who at Kilburn 1977
 Too Hot to Handel: The Gospel Messiah
 Violent Femmes 40th Anniversary with the Milwaukee Symphony Orchestra
 Wes Montgomery: A Celebration Concert
 Whitney Houston: The Concert for a New South Africa
 Youth Music of the World (series)

Science, Nature and Health

8 Days: To the Moon and Back
 Accidental Host: The Story of Rat Lungworm Disease
 Animal Babies: First Year on Earth (series)
 Attenborough and the Giant Elephant

Big Cats 24/7 (series)
 Big Pacific (series)
 Brief History of the Future (series)
 Bugs That Rule the World (series)
 Changing Planet (series)
 Changing Seas (series)
 Chasing the Tide (series)
 Dynamic Planet (series)
 Earth's Natural Wonders (series)
 Great Yellowstone Thaw (series)
 Hope in the Water (series)
 Human Footprint (series)
 Impossible Builds (series)
 Japan's Top Inventions (series)
 Life at the Waterhole (series)
 Life from Above (series)
 Nature (series)
 NOVA (series)
 Ocean Souls
 Outback (series)
 Planet California (series)
 Science View (series)
 Sea Change: The Gulf of Maine, a NOVA Special
 Secrets of the Dead (series)
 SoCal Snowy Owl (series)
 Spy in the Ocean, a Nature Miniseries
 The Age of Nature (series)
 The Amazing Human Body (series)
 The Earthshot Report
 The Future of Nature (series)

The Great Polar Bear Feast
 To the Ends of the Earth: The Natural World
 Walking with Dinosaurs (series)
 Weathered: Earth's Extremes (series)
 Weathered: Inside the La Firestorm
 When Disaster Strikes (series)
 Wild Metropolis (series)
 Wild Scandinavia (series)
 Wonders of Mexico (series)

Travel, Cooking, and DIY

25 Years with Lidia: A Culinary Jubilee
 American Woodshop (series)
 America's Test Kitchen (series)
 Ask This Old House (series)
 Best of the Joy of Painting (series)
 Canvasing the World (series)
 Christopher Kimball's Milk Street Television (series)
 Classical Stretch by Essentrics (series)
 Cooking with Legends: Lidia Bastianich
 & Jacques Pepin
 Cook's Country (series)
 Core Kyoto (series)
 Curious Traveler (series)
 Dining with the Chef (series)
 Field Trip with Curtis Stone: Hong Kong
 Flavors of the Dominican Republic
 Ireland's Wild Coast (series)
 Islands Without Cars (series)
 J Schwanke's Life in Bloom (series)
 Japan From Above: Up Close (series)
 Japanology Plus (series)
 Joseph Rosendo's Steppin' Out (series)
 Journeys in Japan (series)
 La Frontera with Pati Jinich (series)
 Lidia Celebrates America
 Lidia's Kitchen (series)
 Lucky Chow (series)
 Lunch On! (series)
 Magical Land of Oz (series)
 Mary Berry's Absolute Favourites (series)
 Mary Berry's Highland Christmas
 Mary Berry's Ultimate Christmas

Milk Street's My Family Recipe (series)
 Motorweek (series)
 Pati Jinich Explores Panamericana (series)
 Pati's Mexican Table (series)
 Ramen Japan (series)
 Rick Steves' Europe: A Symphonic Journey
 Rick Steves European Christmas
 Rick Steves Experiencing Europe
 Rick Steves Iceland
 Rick Steves Mighty Alps
 Rick Steves Poland
 Roadtrip Nation (series)
 Samantha Brown's Places to Love (series)
 Sara's Weeknight Meals (series)
 Seasoning the Seasons (series)
 Sit and Be Fit (series)
 The Herriot Way
 The Joy of Painting with Nicholas Hankins (series)
 The Seasons of Yamato (series)
 This Old House (series)
 Time-Lapse Japan (series)
 Trails to Oishii Tokyo (series)
 View Finders (series)
 Volunteer Woodworker (series)
 Woodsmith Shop (series)



Milk Street's My Family Recipe



ABOUT US

PBS Hawai'i advances learning and discovery through storytelling that profoundly touches lives. Major support of the station comes from individuals, businesses, government and charitable foundations of Hawai'i.

PBS HAWAII

315 Sand Island Access Road
Honolulu, Hawai'i 96819
808.462.5000 Toll Free: 800.238.4847

WEBSITE

pbshawaii.org

PBS Hawai'i, a member of the Public Broadcasting Service (PBS), is a community-supported, non-commercial public television station broadcasting throughout the State of Hawai'i.